

Furnished flat in Harvestehude, close to the Alster

short-term rental apartment	Rent incl. add. costs 1.200,00 EUR per Month	Living space ca. 60,00 qm	Number of rooms 2,0	Available from 01.11.2024
--------------------------------	---	------------------------------	------------------------	------------------------------

Other dates

District	Eimsbüttel
Deposit	2.400,00 EUR
Floor	
Available until	Open-ended
Minimum rental length	180 days
Maximum number of tenants	1
Smoking / Nonsmoker	Non-smokers only
Balcony	no
Elevator	No
Garden	No

Facilities

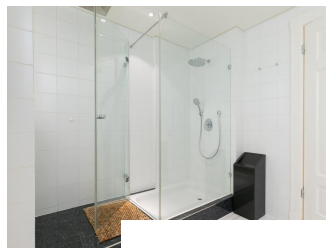
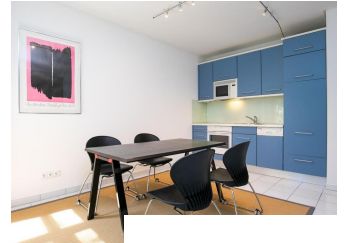
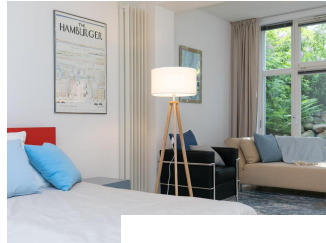
- built-in kitchen
- bathroom with shower
- dishwasher
- tiles
- bed-linnen
- Energieausweis
- central heating
- cable-TV
- washingmachine
- towels
- Internet

References

Please read our Notes on currency conversion under <http://www.homecompany.de/en/currency-info>

Website synopsis

<http://hamburg.homecompany.de/en/object/AG7019788>



Description

Comfortably furnished basement apartment in an Art Nouveau villa with large windows overlooking the tranquil garden.

The apartment has a modern, bright feel and is (500 m to the Alster) in a prime residential / Address location and close to the popular Eppendorf and Winterhuder shopping and dining scene.

The apartment is modern furnished and equipped with a high quality fitted kitchen and a spacious shower room. A washer-dryer is available. The living room has a 100 cm flat screen TV (cable TV), DVD and stereo system available. The bedroom is equipped with a 1.40 m wide bed.

Rent plus the cost for a cleaning service every second week.

Internet; cable TV is available and inclusive.

Rent incl. television fees.

Online viewing of the flat (360 ° panorama photos):

<https://tour.feelestate.com/view/fullscreen/id/VV3DB>

Energy pass information acc. to § 16a EnEV 2014:

Type of energy pass: Consumption based energy pass

Final consumption value: 131,4 kWh/(m²*a)

Main source of heating energy heating: district heating

Year of construction: 1906

Print out 17.05.2024