

City apartment in New York style in Hamburg Rotherbaumchaussee, corner Hallerstraße

short-term rental apartment	Rent incl. add. costs 1.050,00 EUR per Month	Living space ca. 30,00 qm	Number of rooms 1,0	Available from 01.11.2024
-----------------------------	---	------------------------------	------------------------	------------------------------

Other dates

District	Eimsbüttel
Deposit	2.100,00 EUR
Floor	5.Floor
Available until	Open-ended
Minimum rental length	365 days
Maximum number of tenants	1
Smoking / Nonsmoker	Non-smokers only
Balcony	yes
Elevator	Yes
Garden	No

Facilities

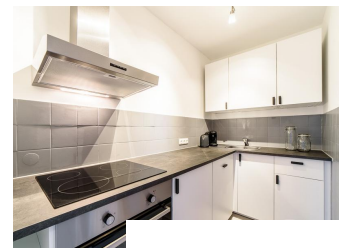
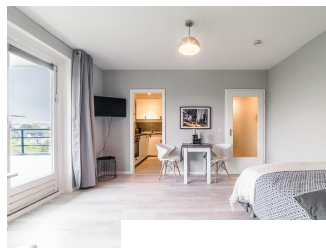
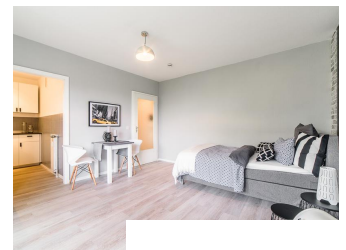
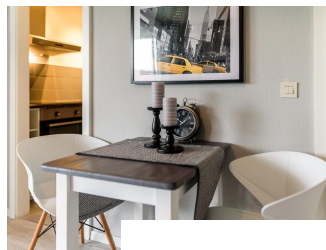
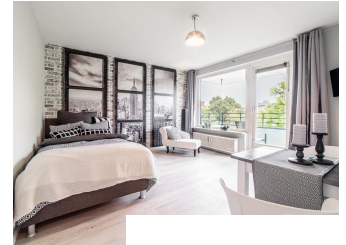
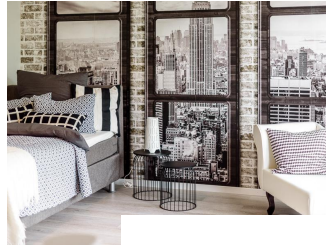
- cable-TV
- washingmachine
- Energieausweis
- Internet
- built-in kitchen
- central heating
- balcony

References

Please read our Notes on currency conversion under <http://www.homecompany.de/en/currency-info>

Website synopsis

<http://hamburg.homecompany.de/en/object/AG7037213>



Description

Completely furnished 1-room apartment in a prime location in the heart of Hamburg Rotherbaum, just a 2-minute walk from the Hallerstraße underground station. The New York City-style decor, decorated in grey-black and white, is modern and contemporary for business people. In the white, new fitted kitchen with dishwasher, oven and stove, the tenant finds everything essential and a Tassimo coffee machine. From the hallway you can reach the bathroom with a simple standard, a small, walk-in room with coat rack, storage space and a shelf as well as the entrance to the bright, large living/bedroom and bedroom. The 1.20x2 m boxspring bed offers a good sleeping comfort. To linger the hell offers itself and is a pair chaise longue at. The large balcony with a magnificent view of the city is oriented to the west. A washing machine and dryer is in the cellar of the house; there is a lift.

Online viewing of the flat (360 ° panorama photos):

<http://panocreator.com/view/gallery/id/VR0GR>

Energy pass information acc. to § 16a EnEV 2014:

Type of energy pass: Consumption based energy pass

Final consumption value: 142 kWh/(m²*a)

Main source of heating energy heating: oil

Year of construction: 1974

Print out 30.04.2024