

## Furnished flat in Blankenese

short-term rental apartment	Rent incl. add. costs 3.400,00 EUR per Month	Living space ca. 146,00 qm	Number of rooms 4,0	Available from 01.07.2024
--------------------------------	---	-------------------------------	------------------------	------------------------------

### Other dates

District	Altona
Deposit	6.800,00 EUR
Floor	Bottom floor
Available until	Open-ended
Minimum rental length	270 days
Maximum number of tenants	3
Smoking / Nonsmoker	Non-smokers only
Balcony	yes
Elevator	No
Garden	No

### Facilities

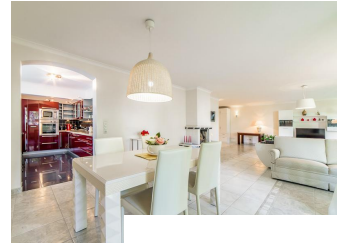
- |                         |                        |
|-------------------------|------------------------|
| - tiles                 | - parquett flooring    |
| - central heating       | - balcony              |
| - towels                | - bed-linnen           |
| - separate bedrooms     | - bathroom with shower |
| - bathroom with bathtub | - built-in kitchen     |
| - dishwasher            | - washingmachine       |
| - Energieausweis        |                        |

### References

Please read our Notes on currency conversion under <http://www.homecompany.de/en/currency-info>

### Website synopsis

<http://hamburg.homecompany.de/en/object/AG7055725>



### Description

Dream apartment in the most beautiful residential area of Hamburg Elbvororte, the historic neighborhood of Blankenese distinguished by its river Elbe, its charming town center and its excellent infrastructure. The apartment has a spacious floor plan living room windows overlooking the lower 23 sqm balcony. The floor is covered with high quality Italian V + B tiles. In both bathrooms the floors are also equipped with LEDs in the floor luxuriously appointed bathrooms, the kitchen and the bedroom floor heating provides comfortable warmth. One of the bathrooms has a bath with jacuzzi with water inlet and wall-hung bidet, WC and wash basin set into the sink and a designer radiator. In the bathroom blue, floor-dimmable LEDs are integrated. The room ventilation can be controlled manually. The flamboyant burgundy lacquered kitchen has all brand appliances provided. All rooms are equipped with sockets for TV / Radio, ISDN and with dimmers equipped. The living room also has a Dolby Surround system. The property is located close to the Elbwanderwege, the Süllbergs and the Forest Park Marienhöhe and Falkensteiner forest. Very convenient transport due to the 8-minute walk away, train station and several bus lines Blankenese. The location is very child friendly, with a diverse selection of schools, colleges and nurseries in the area. The International School can be reached in just 10 minutes.

Online viewing of the flat (360 ° panorama photos):

<http://panocreator.com/view/gallery/id/VRYDT>

Energy pass information acc. to § 16a EnEV 2014:

Type of energy pass: Consumption based energy pass

Final consumption value: 257 kWh/(m²\*a)

Main source of heating energy heating: natural gas

Year of construction: 1972