

Apartment in a cool and homely design in the middle of Hamburg Ottensen

short-term rental apartment	Rent incl. add. costs 1.400,00 EUR per Month	Living space ca. 47,00 qm	Number of rooms 2,0	Available from 01.02.2025
--------------------------------	---	------------------------------	------------------------	------------------------------

Other dates

District	Altona
Deposit	2.800,00 EUR
Floor	3.Floor
Available until	Open-ended
Minimum rental length	270 days
Maximum number of tenants	2
Smoking / Nonsmoker	Non-smokers only
Balcony	yes
Elevator	Yes
Garden	No

Facilities

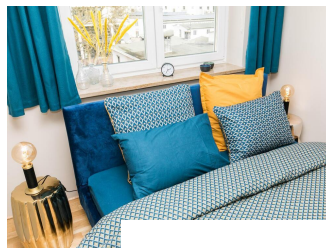
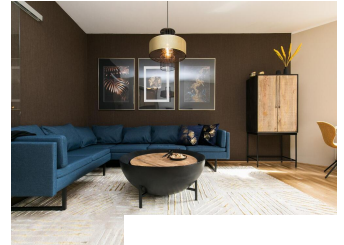
- | | |
|--------------------|-------------------------|
| - central heating | - built-in kitchen |
| - balcony | - washingmachine |
| - bed-linnen | - towels |
| - antenna-TV | - Energieausweis |
| - dishwasher | - Internet |
| - parquet flooring | - bathroom with bathtub |

References

Please read our Notes on currency conversion
under <http://www.homecompany.de/en/currency-info>

Website synopsis

<http://hamburg.homecompany.de/en/object/AG7073282>



Description

In the heart of Hamburg Ottensen and within walking distance of the river Elbe - best location for this stylish business flat with a quiet balcony. The walls are in elegant beige-gray "Drop Cloth" from Farrow & Ball. The beautiful oak parquet and warm gold tones combined with elegant blue and black complete the ambience. The heart of the living room is the large sofa and the special 90 cm coffee table made of iron and mango wood. The black and gold hanging lamp is another real eye-catcher. The highboard made of fine mango wood is an extraordinary model for high living demands. The spacious interior with five compartments also offers plenty of space. The casual console sideboard in a cool look is made of steel, has a glass top and impresses with its unusual design.

The adjoining open kitchen is fully equipped. The balcony is quiet and can accommodate 2 people. There is a walk-in closet in the hallway, with plenty of space for shoes and household appliances. The bathtub is bright and spacious and has a new glass shower wall. The bedroom has a blackout blind, a 1.60 x 2 m bed with a comfortable mattress and a 3-door wardrobe with clothes rail, shelves and two drawers.

There is an elevator in the house. Washing machine and dryer are in the 5th floor.

Online viewing of the flat (360 ° panorama photos):

<https://tour.feelstate.com/view/fullscreen/id/VVB8N>

Energy pass information acc. to § 16a EnEV 2014:

Type of energy pass: Consumption based energy pass

Final consumption value: 89,1 kWh/(m²*a)

Main source of heating energy heating: natural gas

Year of construction: 1985