

## Quiet location with good access to the city center

short-term rental apartment	Rent incl. add. costs 1.100,00 EUR per Month	Living space ca. 37,00 qm	Number of rooms 2,0	Available from 01.02.2025
--------------------------------	---	------------------------------	------------------------	------------------------------

### Other dates

District	Eimsbüttel
Deposit	2.200,00 EUR
Floor	2.Floor
Available until	Open-ended
Minimum rental length	270 days
Maximum number of tenants	1
Smoking / Nonsmoker	Non-smokers only
Balcony	yes
Elevator	Yes
Garden	No

### Facilities

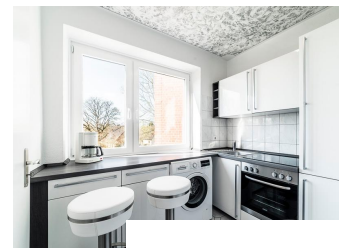
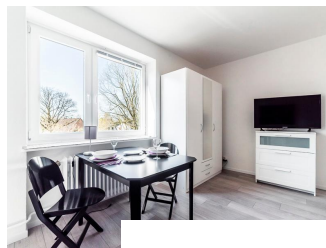
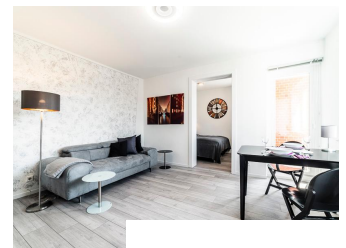
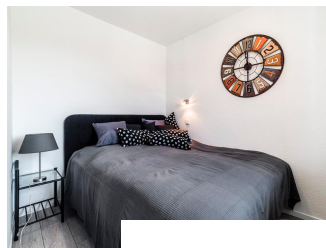
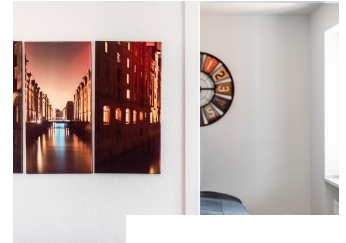
- |                        |                     |
|------------------------|---------------------|
| - Energieausweis       | - balcony           |
| - bed-linnen           | - towels            |
| - bathroom with shower | - laminate flooring |
| - built-in kitchen     | - central heating   |
| - Internet             | - washingmachine    |
| - cable-TV             |                     |

### References

Please read our Notes on currency conversion  
under <http://www.homecompany.de/en/currency-info>

### Website synopsis

<http://hamburg.homecompany.de/en/object/AG7080067>



### Description

The beautifully cut bright apartment, furnished and renovated in 2017, is located in a friendly residential street in the north of Hamburg. On the sunny and quiet balcony, the end of work can be relaxed. The entire apartment is designed in a bright gray / white color scheme and radiates friendly serenity. The living room has a cozy large sofa and a small dining area directly in front of the window. The bedroom is equipped with a 1.60 m wide box spring bed and offers restful sleeping comfort. In the modern white fitted kitchen you will also find space for a small snack in between. A buttry is also available. The white bathroom has a spacious shower. The house has a large garden, which can be used very much. A garbage chute is located in the hallway With the nearby public transport you can reach the city of Hamburg in 30 minutes.

Online viewing of the flat (360 ° panorama photos):

<http://panocreator.com/view/gallery/id/VR38Q>

Energy pass information acc. to § 16a EnEV 2014:

Type of energy pass: Consumption based energy pass

Final consumption value: 171 kWh/(m²\*a)

Main source of heating energy heating: light heating oil

Year of construction: 1965

Print out 17.05.2024