

Furnished flat Süd" in "City apartment close to Sonninkanal

short-term rental apartment	Rent incl. add. costs 1.500,00 EUR per Month	Living space ca. 46,00 qm	Number of rooms 2,0	Available from 22.05.2024
-----------------------------	---	------------------------------	------------------------	------------------------------

Other dates

District	Hamburg-Mitte
Deposit	3.000,00 EUR
Floor	5.Floor
Available until	Open-ended
Minimum rental length	300 days
Maximum number of tenants	1
Smoking / Nonsmoker	Non-smokers only
Balcony	yes
Elevator	Yes
Garden	No

Facilities

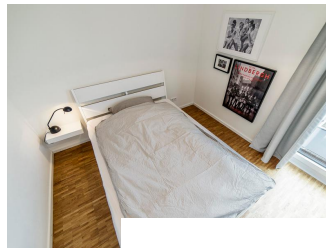
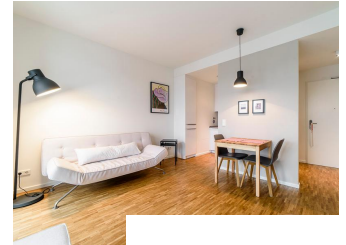
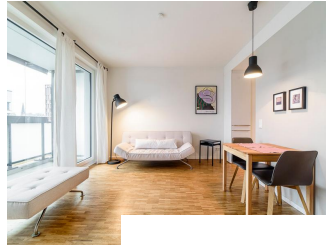
- balcony	- bed-linnen
- towels	- dishwasher
- washingmachine	- bathroom with bathtub
- parquet flooring	- built-in kitchen
- Internet	- cable-TV
- Energieausweis	

References

Please read our Notes on currency conversion under <http://www.homecompany.de/en/currency-info>

Website synopsis

<http://hamburg.homecompany.de/en/object/AG7083182>



Description

In a newly developing, very central residential area situated new apartment with modern furniture in pleasantly subtle color tones. From the living room you look through floor-to-ceiling windows across the balcony towards the city center. The balcony is both open, as well as (with closed glazing) usable as a loggia. House entrance and apartment are oriented towards the Sonninkanal. Together with the view of the city, this results in a typical for Hamburg, very urban, yet relaxed, quiet atmosphere. The way to the bus stop goes along the canal. The apartment is equipped with oak floors and underfloor heating. In combination with the furnishing in white and light gray tones, this creates a very appealing living ambience. The kitchen is open to the living room. The bedroom is equipped with a 1.40 wide bed, there is ample closet space available. Through two windows you look in the direction of the city center. The rather large bathroom is fresh and bright in white. The washing machine is located in an additional storage room. If rented by 2 people, the rental price increases by EUR 50. Online viewing of the flat (360 ° panorama photos): <http://panocreator.com/view/gallery/id/VRX3V> Energy pass information acc. to § 16a EnEV 2014: Type of energy pass: Energy demand certificate Final demand value: 39,4 kWh/(m²*a) Main source of heating energy heating: district heating Year of construction: 2016 Energy efficiency class: A

Print out 22.05.2024