

## Luxuriously furnished penthouse in Hamburg Uhlenhorst

short-term rental apartment	Rent incl. add. costs 2.800,00 EUR per Month	Living space ca. 112,00 qm	Number of rooms 3,0	Available from 13.05.2024
--------------------------------	---	-------------------------------	------------------------	------------------------------

### Other dates

District	Hamburg-Nord
Deposit	5.600,00 EUR
Floor	4.Floor
Available until	15.07.2024
Minimum rental length	61 days
Maximum number of tenants	2
Smoking / Nonsmoker	Non-smokers only
Balcony	yes
Elevator	Yes
Garden	No

### Facilities

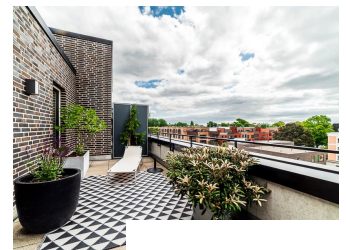
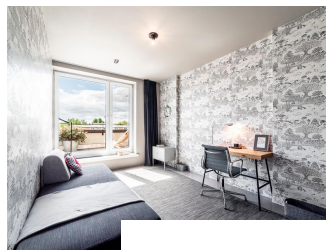
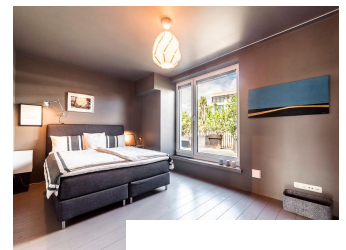
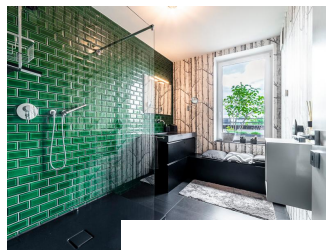
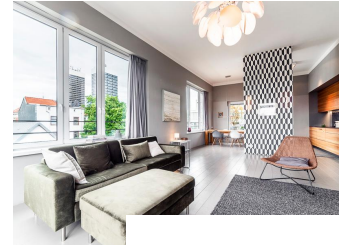
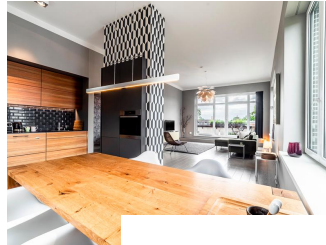
- |                     |                        |
|---------------------|------------------------|
| - balcony           | - parquett flooring    |
| - built-in kitchen  | - bathroom with shower |
| - bed-linnen        | - towels               |
| - washingmachine    | - dishwasher           |
| - HIFI              | - cable-TV             |
| - separate bedrooms | - Energieausweis       |
| - Internet          |                        |

### References

Please read our Notes on currency conversion under <http://www.homecompany.de/en/currency-info>

### Website synopsis

<http://hamburg.homecompany.de/en/object/AG7084513>



### Description

rental only from asap until 30.06.2024

Luxurious furnishings and perfect design determine the style of the apartment and provide a cool-comfortable atmosphere.

Gray design flooring in combination with modern wallpaper patterns and quiet wall surfaces contrast with individual pictures and a warm wood tone in the continuous grain of the kitchen front. Other kitchen elements are almost invisibly integrated into a pillar. The living area is very modern. A HD TV (50 inches) is available. The two richly planted roof terraces are accessible from the large living room with kitchen and dining area. An automatic irrigation system provides the plants, so you can enjoy the small green oasis carefree. The bedroom is equipped with a 1.60 m wide double bed. In addition, a guest room with a 0.90 m wide bed is available. A large underground parking space is included in the rental price

Online viewing of the flat (360 ° panorama photos): <http://panocreator.com/view/gallery/id/VRKMT>

Energy pass information acc. to § 16a EnEV 2014:

Type of energy pass: Energy demand certificate

Final demand value: 53,5 kWh/(m²\*a)

Main source of heating energy heating: district heating

Year of construction: 2010

Print out 13.05.2024