

## \*\*Top central in Hamburg Neustadt\*\* Furnished, quiet business apartment with balcony

short-term rental apartment	Rent incl. add. costs 1.550,00 EUR per Month	Living space ca. 40,00 qm	Number of rooms 2,0	Available from 01.11.2024
-----------------------------	---	------------------------------	------------------------	------------------------------

### Other dates

District	Hamburg-Mitte
Deposit	3.100,00 EUR
Floor	Bottom floor
Available until	Open-ended
Minimum rental length	300 days
Maximum number of tenants	2
Smoking / Nonsmoker	Non-smokers only
Balcony	yes
Elevator	No
Garden	No

### Facilities

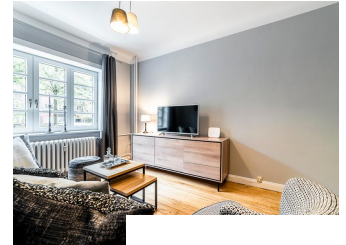
- balcony	- bed-linnen
- towels	- dishwasher
- Internet	- built-in kitchen
- washingmachine	- wooden flooring
- bathroom with shower	- Energieausweis
- cable-TV	- living kitchen
- central heating	

### References

Please read our Notes on currency conversion under <http://www.homecompany.de/en/currency-info>

### Website synopsis

<http://hamburg.homecompany.de/en/object/AG7084587>



### Description

This furnished apartment in a prime inner-city location between Alster and Michel in a quiet little street in a listed building is perfect for professionals. The beautiful old buildings and lovely windows give the apartment a nice feel-good charm. There is a very beautiful wooden floor in the living room, bedroom and hall, in the kitchen and in the bathroom a dark, very modern tiled floor in anthracite. The 1.40 m boxspring bed guarantees high sleeping comfort. Also, the daylight bathroom has been completely redone in 2018 and has a large cozy shower with glass wall and rain shower. The large kitchen with a modern, new white fitted kitchen is equipped with everything for business people. There is also a 1.20-sized kitchen table and access to the quiet balcony. The charming living room is also newly furnished and invites you to linger.

Online viewing of the flat (360 ° panorama photos): <http://panocreator.com/view/gallery/id/VRJJ0>  
 The apartment is located in a listed building.