

Comfort in Hamburg Eppendorf

short-term rental apartment	Rent incl. add. costs 1.550,00 EUR per Month	Living space ca. 47,00 qm	Number of rooms 2,0	Available from 01.02.2025
--------------------------------	---	------------------------------	------------------------	------------------------------

Other dates

District	Hamburg-Nord
Deposit	3.100,00 EUR
Floor	4.Floor
Available until	Open-ended
Minimum rental length	270 days
Maximum number of tenants	2
Smoking / Nonsmoker	Non-smokers only
Balcony	no
Elevator	Yes
Garden	No

Facilities

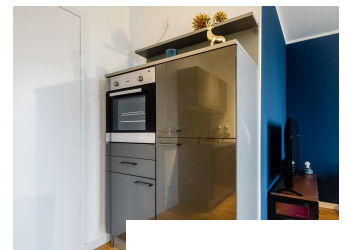
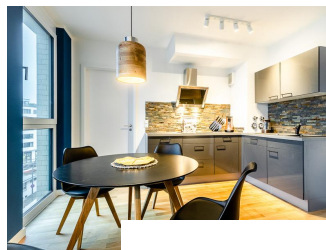
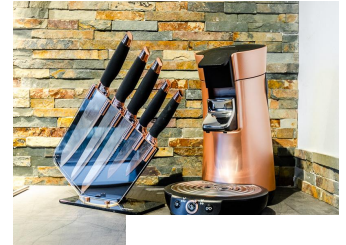
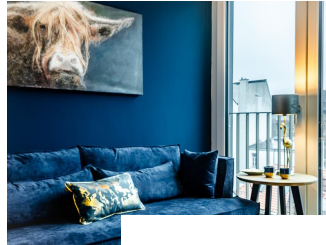
- | | |
|--------------------|------------------------|
| - washingmachine | - bed-linnen |
| - towels | - bathroom with shower |
| - built-in kitchen | - dishwasher |
| - Internet | - Energieausweis |

References

Please read our Notes on currency conversion
under <http://www.homecompany.de/en/currency-info>

Website synopsis

<http://hamburg.homecompany.de/en/object/AG7087116>



Description

In blue and gold designed, furnished flat in a nice location.

The new elements typical of the building, the floor-to-ceiling windows, the oak parquet floor with underfloor heating and the modern building technology ensure contemporary living comfort, complemented by the stylish design and choice of furniture.

The glossy gray fronts of the open kitchen are in deliberate contrast to the handles made of genuine leather straps. The tile mirror is made of natural stone slips. A round dining table with 4 chairs forms the transition to the living area with the blue upholstered furniture and a 50 inch TV (Magenta home). 400 MBit fast Internet is available as well as a usable in all rooms bluetooth music system.

Adjacent to the bedroom furnished with a 1.80 wide double bed, there is a walk-in closet with perfect equipment with numerous poles, shelves, pull-outs and compartments of every size. Here is really the right place for every piece ready.

The modern shower room is equipped with a washer-dryer as a combination unit.

Due to the modern ventilation technology, the apartment is always supplied with fresh air and protected as possible from moisture.

Behind the house a small garden area can be used. Here is also a bicycle shelter available.

Online viewing of the flat (360 ° panorama photos):

<http://panocreator.com/view/gallery/id/VRHR3>

Energy pass information acc. to § 16a EnEV 2014:

Type of energy pass: Energy demand certificate

Final demand value: 56,7 kWh/(m²*a)

Main source of heating energy heating: natural gas

Year of construction: 2017

Energy efficiency class: B