

Comfortable newly built apartment with communal roof terrace

short-term rental apartment	Rent incl. add. costs 1.200,00 EUR per Month	Living space ca. 31,00 qm	Number of rooms 1,0	Available from 01.07.2024
-----------------------------	---	------------------------------	------------------------	------------------------------

Other dates

District	Altona
Deposit	2.400,00 EUR
Floor	Bottom floor
Available until	Open-ended
Minimum rental length	365 days
Maximum number of tenants	1
Smoking / Nonsmoker	Non-smokers only
Balcony	yes
Elevator	No
Garden	No

Facilities

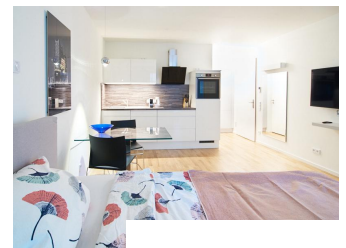
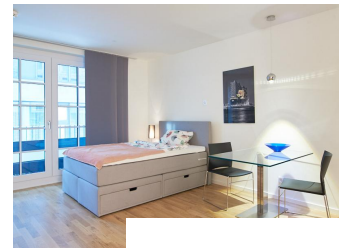
- | | |
|---------------------|------------------------|
| - balcony | - bed-linnen |
| - towels | - washingmachine |
| - built-in kitchen | - bathroom with shower |
| - Internet | - cable-TV |
| - parquett flooring | - terrace |
| - Energieausweis | |

References

Please read our Notes on currency conversion under <http://www.homecompany.de/en/currency-info>

Website synopsis

<http://hamburg.homecompany.de/en/object/AG7089123>



Description

The perfectly equipped newly built apartment is located on the grounds of the historic headquarters in the Kühnehöfen. The apartment was completely refitted in June 2019. Innovative technology offers special living comfort. For example, the windows are provided with a discreet mirror surface to ensure perfect privacy. The open kitchen is equipped with an acoustically virtually imperceptible refrigerator.

Adjacent to the kitchen is a small dining area with a modern glass table. The apartment is equipped with a 1.40 wide box spring bed. Ample storage space is available in the large sliding door wardrobe.

A special highlight is the only used by the house community roof terrace. Here you can enjoy long panoramic views over Hamburg on long summer evenings. Many Hamburg landmarks, such as the Michel, the "Tanzende Türme", the Elbphilharmonie and the harbor are in the picture.

The apartment has a washer / dryer combi unit.

Online viewing of the flat (360 ° panorama photos):

<https://tour.feelestate.com/view/fullscreen/id/VVZSK>

Energy pass information acc. to § 16a EnEV 2014:

Type of energy pass: Energy demand certificate

Main source of heating energy heating: district heating

Year of construction: 2019

Print out 17.05.2024