

## Perfect for two colleagues, comfortable and good transport links

short-term rental apartment	Rent incl. add. costs 1.900,00 EUR per Month	Living space ca. 76,00 qm	Number of rooms 3,0	Available from 01.10.2024
--------------------------------	---	------------------------------	------------------------	------------------------------

### Other dates

District	Eimsbüttel
Deposit	3.800,00 EUR
Floor	Bottom floor
Available until	Open-ended
Minimum rental length	210 days
Maximum number of tenants	2
Smoking / Nonsmoker	Non-smokers only
Balcony	no
Elevator	No
Garden	Yes

### Facilities

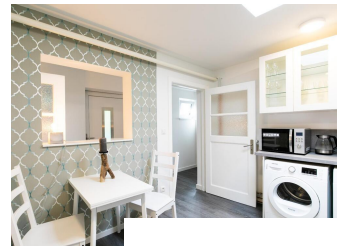
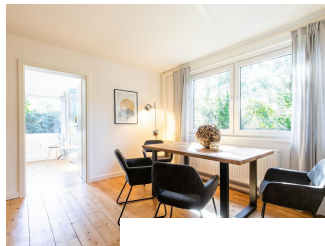
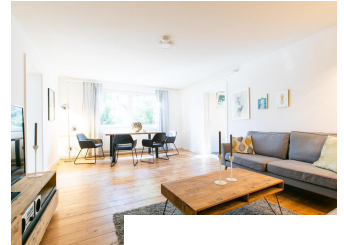
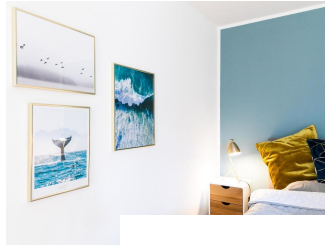
- |                     |                         |
|---------------------|-------------------------|
| - separate bedrooms | - bed-linnen            |
| - towels            | - dishwasher            |
| - wooden flooring   | - bathroom with shower  |
| - built-in kitchen  | - washingmachine        |
| - living kitchen    | - garden                |
| - Internet          | - antenna-TV            |
| - Energieausweis    | - bathroom with bathtub |

### References

Please read our Notes on currency conversion  
under <http://www.homecompany.de/en/currency-info>

### Website synopsis

<http://hamburg.homecompany.de/en/object/AG7090608>



### Description

Completely furnished apartment in a backward extension of a family house. There is a large living room with a sofa corner, 50 inch smart TV and a dining table for four people. The two bedrooms are each equipped with a box spring bed, wardrobe, and a comfortable armchair with side table. The kitchen, as well as the living room, is located in the middle of the apartment. Here are washing machine and dryer available. There is a small hatch from the kitchen to the hallway. The finely tuned modern furniture is highlighted by the perfect selection of wallpapers. White branches against a golden background, golden flying fish on a noble blue graphic wave pattern and a pattern alternating between blue and silver on a velvety background set special accents.

The apartment is perfect for a single person, a couple or two colleagues. A belonging to the apartment, overgrown with evergreen plants part of the garden belongs to the apartment.

A supermarket open until 10pm is within walking distance, the A7 is less than a 5 minute drive.

Online viewing of the flat (360 ° panorama photos):  
<https://tour.feelstate.com/view/fullscreen/id/VV8RS>

Energy pass information acc. to § 16a EnEV 2014:

Type of energy pass: Consumption based energy pass

Final consumption value: 200.2 kWh/(m²\*a)

Main source of heating energy heating: heating oil

Year of construction: 1936

Energy efficiency class: G