

Furnished flat close to Goldbekkanal in Hamburg Winterhude

short-term rental apartment	Rent incl. add. costs 1.450,00 EUR per Month	Living space ca. 52,00 qm	Number of rooms 2,0	Available from 01.10.2024
--------------------------------	-------------------------------------------------	------------------------------	------------------------	------------------------------

Other dates

District	Hamburg-Nord
Deposit	2.000,00 EUR
Floor	2.Floor
Available until	Open-ended
Minimum rental length	240 days
Maximum number of tenants	2
Smoking / Nonsmoker	Non-smokers only
Balcony	no
Elevator	No
Garden	No

Facilities

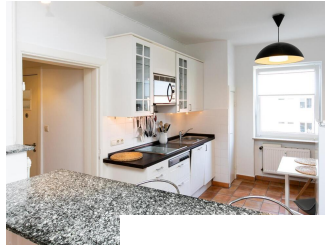
- built-in kitchen
- wooden flooring
- dishwasher
- towels
- Internet
- bathroom with bathtub
- washingmachine
- bed-linnen
- cable-TV
- Energieausweis

References

Please read our Notes on currency conversion under <http://www.homecompany.de/en/currency-info>

Website synopsis

<http://hamburg.homecompany.de/en/object/AG7090644>



Description

Nicely furnished apartment in a quiet location in Winterhude. The apartment is optimally cut due to the open kitchen and corridor area and looks larger than the number of square meters suggests. There is a comfortable counter with up to four seats between the living and kitchen areas. There is also a kitchen table with two chairs. The living room is furnished with a comfortable sofa, TV and sideboard. In addition to the built-in microwave, an oven (free-standing appliance) is available in the kitchen.

The freezer is equipped with a spacious freezer compartment (several drawers). The cloakroom is located in a small chamber leading from the hallway. In another chamber is the washing machine and plenty of storage space for household appliances (vacuum cleaner, ironing board, iron, etc.).

The bedroom is furnished with a 1.40 m wide bed, lots of cupboard space and a small desk for the notebook and armchair.

65/5000

The apartment is located in a quiet residential street to the rear. Shops, restaurants and the Goldbek Canal are within walking distance.

Online viewing of the flat (360 ° panorama photos): <https://tour.feelstate.com/view/fullscreen/id/VV9LC>

Energy pass information acc. to § 16a EnEV 2014:

Type of energy pass: Consumption based energy pass

Final consumption value: 133,5 kWh/(m²*a)

Main source of heating energy heating: heating oil

Year of construction: 1930

Energy efficiency class: E