

New apartment on historic company premises in Bahrenfeld

short-term rental apartment	Rent incl. add. costs 1.450,00 EUR per Month	Living space ca. 45,00 qm	Number of rooms 2,0	Available from 01.08.2024
--------------------------------	---	------------------------------	------------------------	------------------------------

Other dates

District	Altona
Deposit	2.900,00 EUR
Floor	1.Floor
Available until	31.07.2026
Minimum rental length	365 days
Maximum number of tenants	1
Smoking / Nonsmoker	Non-smokers only
Balcony	yes
Elevator	Yes
Garden	No

Facilities

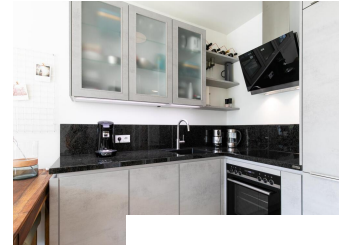
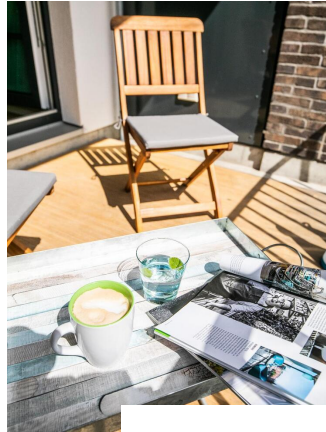
- | | |
|--------------------|------------------------|
| - balcony | - bed-linnen |
| - towels | - parquett flooring |
| - built-in kitchen | - bathroom with shower |
| - dishwasher | - washingmachine |
| - Internet | - cable-TV |
| - Energieausweis | |

References

Please read our Notes on currency conversion under <http://www.homecompany.de/en/currency-info>

Website synopsis

<http://hamburg.homecompany.de/en/object/AG7091200>



Description

The apartment is located on the site of the historic company headquarters in the Kühnehöfe and was refurbished in 2020. Innovative technology offers special living comfort. For example, the windows have a subtle mirror surface to ensure perfect privacy. Underfloor heating also offers special living comfort.

The view of the Kuehne building opposite and diagonally into the adjacent street space is very beautiful. The large distance to the next building makes the apartment quite bright and conveys a sense of space.

The kitchen is open to the living room. There is a comfortable dining table between the living area and the kitchen. The bedroom is furnished with a 1.40 m wide bed.

A special highlight is the roof terrace, which is only used by the community. Here you can enjoy a wide panoramic view of Hamburg on long summer evenings. Many Hamburg landmarks, such as the Michel, the dancing towers, the Elbphilharmonie and the harbor are in view.

Online viewing of the flat (360 ° panorama photos): <https://tour.feelestate.com/view/fullscreen/id/VV4HV>

Energy pass information acc. to § 16a EnEV 2014:

Type of energy pass: Energy demand certificate

Final demand value: 54 kWh / (m²*a)

Main source of heating energy heating: district heating with CHP

Year of construction: 2019

Energy efficiency class: B