

Stylish business flat with parking space. Only about 5 minutes away from "Stadtpark", City Nord or city center

short-term rental apartment	Rent incl. add. costs 1.350,00 EUR per Month	Living space ca. 43,00 qm	Number of rooms 1,5	Available from 01.03.2025
-----------------------------	---	------------------------------	------------------------	------------------------------

Other dates

District	Hamburg-Nord
Deposit	2.700,00 EUR
Floor	5.Floor
Available until	Open-ended
Minimum rental length	240 days
Maximum number of tenants	1
Smoking / Nonsmoker	Non-smokers only
Balcony	yes
Elevator	Yes
Garden	No

Facilities

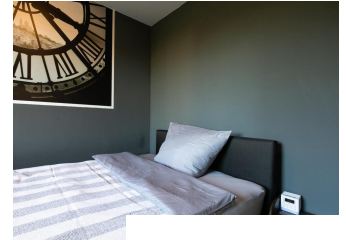
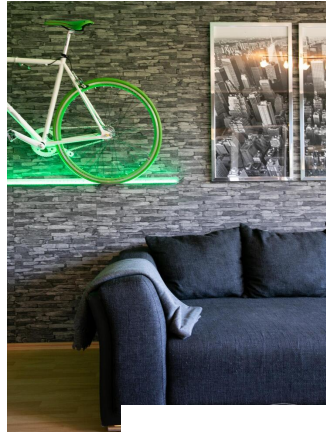
- balcony	- bathroom with shower
- washingmachine	- satellite-TV
- cable-TV	- bed-linnen
- towels	- Energieausweis
- Internet	- dishwasher

References

Please read our Notes on currency conversion under <http://www.homecompany.de/en/currency-info>

Website synopsis

<http://hamburg.homecompany.de/en/object/AG7092203>



Description

Beautifully designed apartment in subtle shades of gray. The dark anthracite-colored walls contrast with the warm wood tones of the furniture. A decorative bike sets a special accent. The sofa can be converted into a comfortable guest sofa in just a few simple steps. A large HD TV (Smart TV) is available. The kitchen and bedroom are directly adjacent. The white sliding doors allow both areas to be variably open or closed without having doors standing in the room. From the balcony there is a wide view of a green area. There are no buildings directly opposite. The Bartholomäus Therme is within sight and can be reached via the green area. The bedroom is equipped with a box spring bed. In the hallway there are white built-in cupboards that offer plenty of storage space. Washing machines and dryers are available as coin-operated devices in the basement of the house. A parking space is included in the rental price. There is an elevator in the house.

Online viewing of the flat (360 ° panorama photos):

<https://tour.feelestate.com/view/fullscreen/id/VVFL3>

Energy pass information acc. to § 16a EnEV 2014:

Type of energy pass: Consumption based energy pass

Final consumption value: 115.20 kWh/(m²*a)

Main source of heating energy heating: district heating

Year of construction: 1980

Energy efficiency class: D