

Time to relax - Elegant. Noble. Exquisite. Unique. Furnished apartment with balcony in Altona

| | | | | |
|-----------------------------|---|------------------------------|------------------------|------------------------------|
| short-term rental apartment | Rent incl. add. costs 1.250,00 EUR per Month | Living space ca. 40,00 qm | Number of rooms 1,0 | Available from 01.06.2024 |
|-----------------------------|---|------------------------------|------------------------|------------------------------|

Other dates

| | |
|---------------------------|------------------|
| District | Altona |
| Deposit | 2.500,00 EUR |
| Floor | 2.Floor |
| Available until | Open-ended |
| Minimum rental length | 365 days |
| Maximum number of tenants | 1 |
| Smoking / Nonsmoker | Non-smokers only |
| Balcony | yes |
| Elevator | No |
| Garden | No |

Facilities

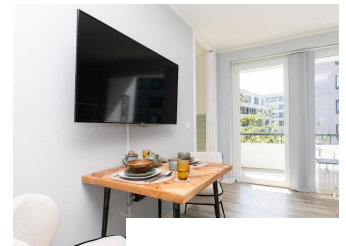
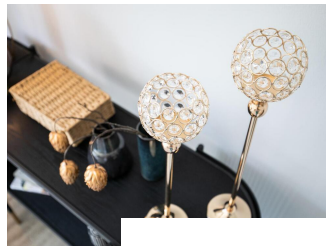
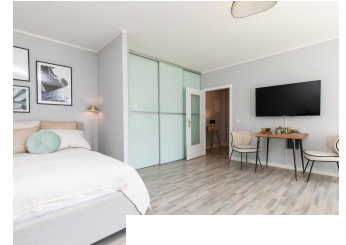
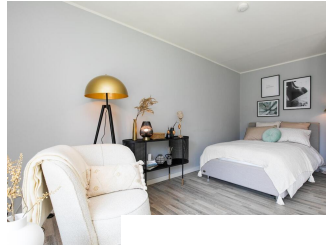
- | | |
|-------------------------|--------------------|
| - balcony | - built-in kitchen |
| - bathroom with bathtub | - PVC |
| - washingmachine | - dishwasher |
| - bed-linnen | - towels |
| - Energieausweis | - Internet |

References

Please read our Notes on currency conversion under <http://www.homecompany.de/en/currency-info>

Website synopsis

<http://hamburg.homecompany.de/en/object/AG7093843>



Description

The bright apartment, which was completely refurbished in 2021, is central, yet quiet, right on Wohlerspark. In the living room / bedroom there is a 1.20 wide upholstered bed with a pocket spring mattress. A soft and very comfortable lounge chair with organically flowing shapes fits perfectly into the business living environment.

Online viewing of the flat (360 ° panorama photos): <https://tour.feelestate.com/view/fullscreen/id/VVKBQ>

Energy pass information acc. to § 16a EnEV 2014:

Type of energy pass: Consumption based energy pass

Final consumption value: 143,4 kWh/(m²*a)

Main source of heating energy heating: fossil Fuel

Year of construction: 1973

Energy efficiency class: E