

## Furnished flat in Hamburg Eppendorf - close to UKE

short-term rental apartment	Rent incl. add. costs 1.250,00 EUR per Month	Living space ca. 36,00 qm	Number of rooms 2,0	Available from 21.05.2024
--------------------------------	---	------------------------------	------------------------	------------------------------

### Other dates

District	Hamburg-Nord
Deposit	2.600,00 EUR
Floor	1.Floor
Available until	Open-ended
Minimum rental length	180 days
Maximum number of tenants	2
Smoking / Nonsmoker	Non-smokers only
Balcony	no
Elevator	No
Garden	No

### Facilities

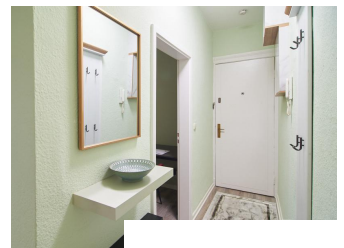
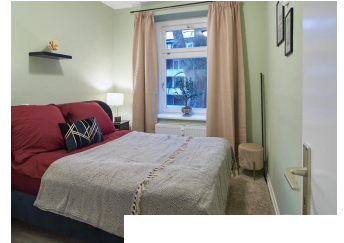
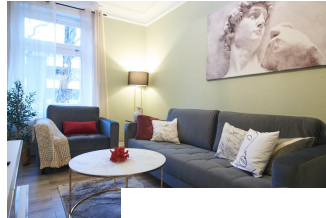
- bathroom with shower
- towels
- Internet
- PVC
- Energieausweis
- bed-linnen
- washingmachine
- cable-TV
- built-in kitchen

### References

Please read our Notes on currency conversion under <http://www.homecompany.de/en/currency-info>

### Website synopsis

<http://hamburg.homecompany.de/en/object/AG7094393>



### Description

Furnished living in the heart of Eppendorf. A comfortable sofa area is available in the living room. A soft and extremely comfortable 2-seater sofa impresses with its clear, cubist design and fits perfectly into the urban business living atmosphere. A coffee table with a marbled glass top and dark marbled side tables with minimalist lines, a TV lowboard with LED lighting and designer lamps underline the comfortably modern style. A dining area with two armchairs is also available. The bedroom is equipped with a 1.40 wide upholstered bed. The revolving door wardrobe offers enough storage space for clothes thanks to the clothes rail, drawers and storage compartments. A designer corner lamp offers over 300 different effects and can be ideally adapted to any mood. The spectrum ranges from warm white light to rainbow colors. The kitchen is equipped with a combination device, oven/microwave, there is a ceramic hob available.

If used by two people, the rent increases by EUR100.

Online viewing of the flat (360 ° panorama photos):

<https://tour.feelestate.com/view/fullscreen/id/VVJJC>

Energy pass information acc. to § 16a EnEV 2014:

Type of energy pass: Consumption based energy pass

Final consumption value: 72,7 kWh/(m²\*a)

Main source of heating energy heating: district heating

Year of construction: 1900

Print out 21.05.2024