

## Furnished business flat with huge terrace

short-term rental apartment	Rent incl. add. costs 1.500,00 EUR per Month	Living space ca. 43,60 qm	Number of rooms 2,0	Available from 01.03.2025
--------------------------------	---	------------------------------	------------------------	------------------------------

### Other dates

District	Eimsbüttel
Deposit	3.000,00 EUR
Floor	3.Floor
Available until	Open-ended
Minimum rental length	180 days
Maximum number of tenants	1
Smoking / Nonsmoker	Non-smokers only
Balcony	yes
Elevator	Yes
Garden	No

### Facilities

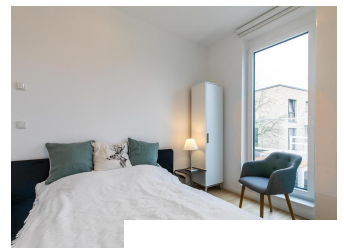
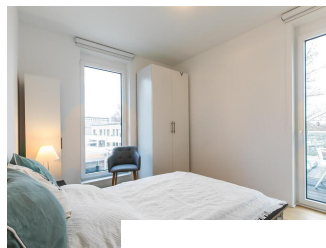
- |                        |                     |
|------------------------|---------------------|
| - balcony              | - built-in kitchen  |
| - bathroom with shower | - parquett flooring |
| - washingmachine       | - dishwasher        |
| - bed-linnen           | - towels            |
| - cable-TV             | - Internet          |
| - Energieausweis       |                     |

### References

Please read our Notes on currency conversion under <http://www.homecompany.de/en/currency-info>

### Website synopsis

<http://hamburg.homecompany.de/en/object/AG7100452>



### Description

Perfectly equipped new flat with a penthouse character, furnished in a subtle gray and white, with a large roof terrace and an additional balcony. The roof terrace is furnished with modern lounge furniture in white metal with wooden sides and gray cushions. There is also a box for storing the pads. The small balcony adjoining the bedroom has another seat, 2 chairs and a table. In the living room there is a comfortable sofa with a chaise longue, which can be used as a sofa bed for guests if required. The large TV is Smart TV capable. The very well-equipped kitchen can be reached via a sliding door. There is a dishwasher, refrigerator, washer-dryer combination, oven and microwave available. A folding dining table is integrated into the sliding door. The bedroom has a 1.40 m wide bed and a wardrobe. The U2 stop Hagenbecks Tierpark and a supermarket are within 3 minutes walking distance.

Online viewing of the flat (360 ° panorama photos): <https://tour.feelstate.com/view/fullscreen/id/VVQJD>

Energy pass information acc. to § 16a EnEV 2014:

Type of energy pass: Energy demand certificate

Final demand value: 59,2 kWh/(m²\*a)

Main source of heating energy heating: Combined heat and power generation, fossil

Year of construction: 2018

Energy efficiency class: B