

Modern and bright furnished studio between trendy "Schanze" and Rotherbaum

| | | | | |
|--------------------------------|---|------------------------------|------------------------|------------------------------|
| short-term rental apartment | Rent incl. add. costs 1.550,00 EUR per Month | Living space ca. 43,69 qm | Number of rooms 1,5 | Available from 01.07.2024 |
|--------------------------------|---|------------------------------|------------------------|------------------------------|

Other dates

| | |
|---------------------------|------------------|
| District | Eimsbüttel |
| Deposit | 1.550,00 EUR |
| Floor | 4.Floor |
| Available until | Open-ended |
| Minimum rental length | 180 days |
| Maximum number of tenants | 2 |
| Smoking / Nonsmoker | Non-smokers only |
| Balcony | no |
| Elevator | No |
| Garden | No |

Facilities

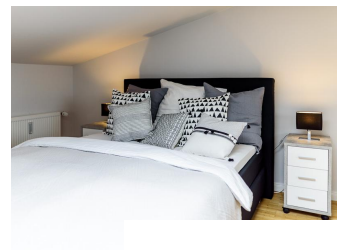
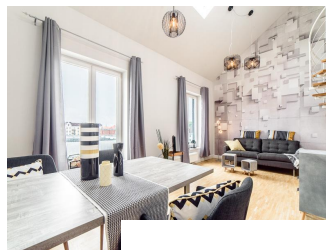
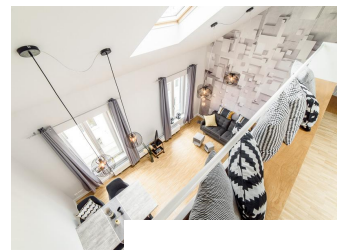
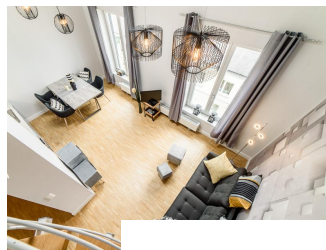
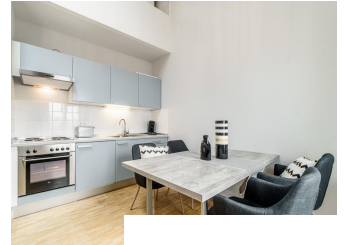
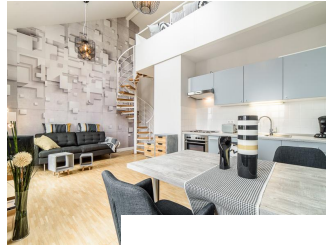
- | | |
|------------------------|--------------------|
| - parquett flooring | - built-in kitchen |
| - bathroom with shower | - washingmachine |
| - antenna-TV | - phone |
| - HIFI | - bed-linnen |
| - towels | - central heating |
| - Energieausweis | - Internet |

References

Please read our Notes on currency conversion under <http://www.homecompany.de/en/currency-info>

Website synopsis

<http://hamburg.homecompany.de/en/object/7006579>



Description

Furnished apartment on 2 levels with oak parquet floor. The light-flooded, open-plan kitchen and living area has a floor space of approx. 5 meters. This particular atmosphere is further reinforced by the wall design and by furniture made of concrete and wood. Modern accessories and lamps with individual design selected with attention to detail complete the overall impression. In the upper area leads a spiral staircase, where the gallery and the bedroom with comfortable 1.60m wide boxspring bed and another storage room.

The total rent of 1550.00 EUR includes 30.00 EUR (incl. 19% VAT) for internet flatrate / wireless and broadcasting fee. The net rent of EUR 1420,56 is plus VAT applicable from time to time, currently 7% (EUR 99,44).

Rental duration: maximum 6 calendar months

Online viewing of the flat (360 ° panorama photos):

<http://panocreator.com/view/gallery/id/VRFWV>

Energy pass information acc. to § 16a EnEV 2014:

Type of energy pass: Consumption based energy pass

Final consumption value: 101 kWh/(m²*a)

Main source of heating energy heating: natural gas

Year of construction: 1918