

Stylish oasis of peace in a central location in popular Hamburg Ottensen

short-term rental apartment	Rent incl. add. costs 1.350,00 EUR per Month	Living space ca. 45,00 qm	Number of rooms 1,5	Available from 01.09.2024
--------------------------------	---	------------------------------	------------------------	------------------------------

Other dates

District	Altona
Deposit	2.700,00 EUR
Floor	3.Floor
Available until	Open-ended
Minimum rental length	365 days
Maximum number of tenants	1
Smoking / Nonsmoker	Non-smokers only
Balcony	no
Elevator	No
Garden	No

Facilities

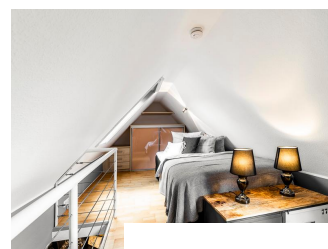
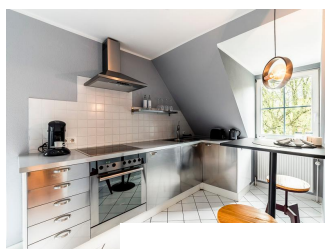
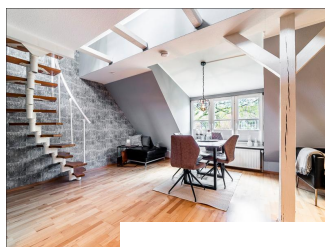
- | | |
|------------------|-------------------|
| - washingmachine | - bed-linnen |
| - cable-TV | - central heating |
| - gas-heating | - Internet |
| - Energieausweis | - towels |

References

Please read our Notes on currency conversion
under <http://www.homecompany.de/en/currency-info>

Website synopsis

<http://hamburg.homecompany.de/en/object/AG7042728>



Description

Very nice furnished stylish oasis in a central location. Wood, naturalness, shabby chic and an urban, modern attitude to life are united here to create a contemporary business look:

The grey wall design as well as warm beige, grey and wood tones in the selection of furniture and accessories create an atmosphere in which living room furniture give the impression that they rather discreetly withdraw to leave the unique wallpaper their grand entrance.

The sofa and armchair in black genuine leather are cleverly crafted with noble-looking acacia wood, sparingly used vintage elements and shiny chrome accessories

combined. A high-quality woolen carpet, shabby chic showcases in the living room and hallway, an acacia wood table, a cool kitchen ensemble complete the feel-good ambience.

For more ease of black leather furniture set appropriate. Decorative and vintage accents that complement the Natural Loftsytyle look with a touch of glamor, modernity and coolness.

About a spiral staircase made of wood reaches the upper sleeping area. The bed measures 1.40 m x 2.00 m.

Good shopping possibilities are in the proximity and W-LAN is available. Online viewing of the flat (360 ° panorama photos):

<http://panocreator.com/view/gallery/id/VR30Q>

Energy pass information acc. to § 16a EnEV 2014:

Type of energy pass: Energy demand certificate

Final demand value: 169,6 kWh/(m²*a)

Main source of heating energy heating: natural gas

Year of construction: 1938