

## Ideal location with balcony

|                             |   |                              |                        |                              |
|-----------------------------|---|------------------------------|------------------------|------------------------------|
| short-term rental apartment | Rent incl. add. costs<br>1.350,00 EUR per Month | Living space ca.<br>74,00 qm | Number of rooms<br>3,0 | Available from<br>01.01.2021 |
|-----------------------------|---|------------------------------|------------------------|------------------------------|

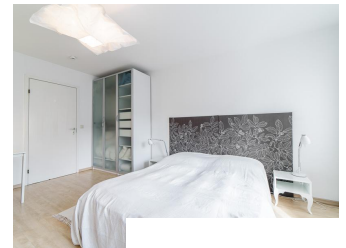
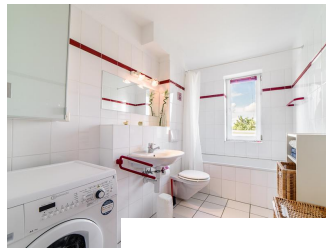
### Other dates

|                           |                  |
|---------------------------|------------------|
| District                  | Eimsbüttel       |
| Deposit                   | 1.300,00 EUR     |
| Floor                     | 4.Floor          |
| Available until           | Open-ended       |
| Minimum rental length     | 90 days          |
| Maximum number of tenants | 2                |
| Smoking / Nonsmoker       | Non-smokers only |
| Balcony                   | yes              |
| Elevator                  | No               |
| Garden                    | No               |



### Facilities

- |                  |                         |
|------------------|-------------------------|
| - balcony        | - laminate flooring     |
| - tiles          | - built-in kitchen      |
| - dishwasher     | - bathroom with bathtub |
| - phone          | - cable-TV              |
| - TV-Gerät       | - video                 |
| - washingmachine | - bed-linnen            |
| - towels         | - Internet              |
| - Energieausweis |                         |

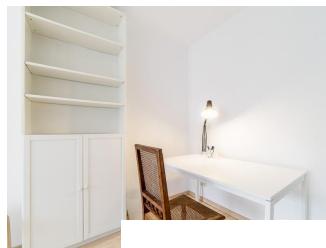


### References

Please read our Notes on currency conversion under <http://www.homecompany.de/en/currency-info>

### Website synopsis

<http://hamburg.homecompany.de/en/object/AG7043611>



### Description

The flat is very calm and bright situated and has a balcony. It is divided into a living room, bedroom with double bed and a dining room. The apartment is furnished modern and restrained in Scandinavian style. Centrally located with excellent shopping nearby.

Online viewing of the flat (360 ° panorama photos): <http://panocreator.com/view/gallery/id/VRTPY>

Energy pass information acc. to § 16a EnEV 2014:

Type of energy pass: Energy demand certificate

Final demand value: 184,2 kWh/(m²\*a)

Main source of heating energy heating: natural gas/district heating

Year of construction: 1956