

## Modern and luxuriously furnished flat in Hamburg Harvestehude

short-term rental apartment	Rent incl. add. costs 1.550,00 EUR per Month	Living space ca. 48,00 qm	Number of rooms 2,0	Available from 01.07.2024
--------------------------------	---	------------------------------	------------------------	------------------------------

### Other dates

District	Harvestehude
Deposit	2.500,00 EUR
Floor	Bottom floor
Available until	Open-ended
Minimum rental length	180 days
Maximum number of tenants	2
Smoking / Nonsmoker	Non-smokers only
Balcony	yes
Elevator	No
Garden	No

### Facilities

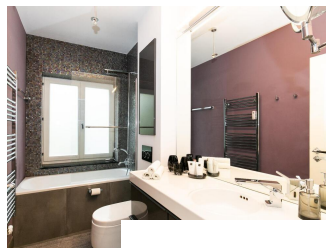
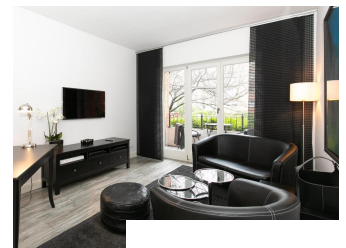
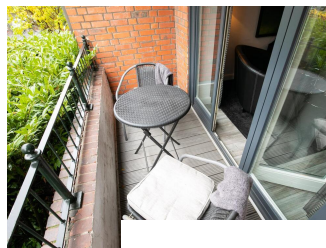
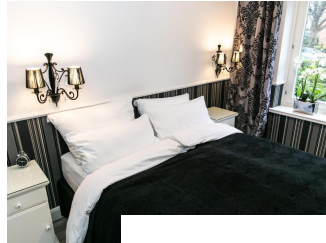
- |                    |                         |
|--------------------|-------------------------|
| - balcony          | - bathroom with bathtub |
| - Internet         | - built-in kitchen      |
| - dishwasher       | - washingmachine        |
| - cleaning service | - laminate flooring     |
| - bed-linnen       | - towels                |
| - phone            | - Energieausweis        |

### References

Please read our Notes on currency conversion  
under <http://www.homecompany.de/en/currency-info>

### Website synopsis

<http://hamburg.homecompany.de/en/object/AG7048102>



### Description

Modern and open plan, very high quality and stylishly furnished apartment in a privileged position. The apartment was completely renovated in January 2012 and refurbished.

In the apartment are two Samsung flatscreen TVs available. Here on the Internet too can be used 100 mbit. An iPod docking station is available. A safe is located in the apartment.

The Bedroom has a double bed with box spring mattresses.

Additional fortnightly cleaning and laundry service can be booked for 60EUR/cleaning. A buffet breakfast and service delivery can be ordered if required at a nearby retail store. The basic fee for DSL and telephone are included in the rent, telephone units are billed separately.

Optionally, an underground garage parking place can be rented for EUR 190.00 per month.

Online viewing of the flat (360 ° panorama photos):  
<http://panocreator.com/view/gallery/id/VRVM6>

Energy pass information acc. to § 16a EnEV 2014:

Type of energy pass: Energy demand certificate

Final demand value: 192,2 kWh/(m²\*a)

Main source of heating energy heating: combined heat and power

Year of construction: 1953

Print out 26.04.2024