

Flat with two balconies in Eppendorf

short-term rental apartment	Rent incl. add. costs 1.990,00 EUR per Month	Living space ca. 70,00 qm	Number of rooms 3,0	Available from 01.07.2024
--------------------------------	---	------------------------------	------------------------	------------------------------

Other dates

District	Eimsbüttel
Deposit	3.200,00 EUR
Floor	3.Floor
Available until	Open-ended
Minimum rental length	270 days
Maximum number of tenants	2
Smoking / Nonsmoker	Non-smokers only
Balcony	yes
Elevator	No
Garden	No

Facilities

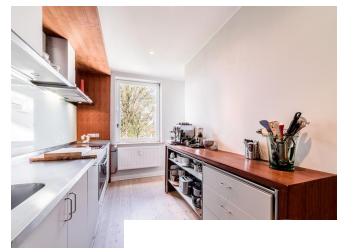
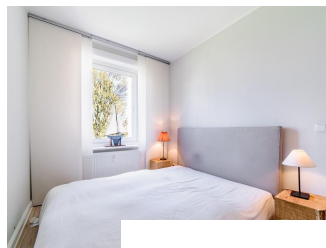
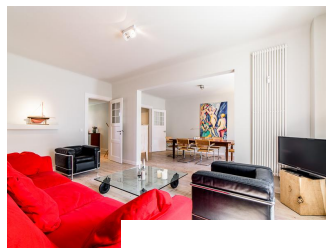
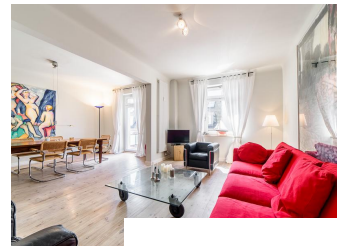
- | | |
|------------------------|--------------------|
| - balcony | - bed-linen |
| - wooden flooring | - Internet |
| - bathroom with shower | - built-in kitchen |
| - dishwasher | - towels |
| - HIFI | - cable-TV |
| - cleaning service | - phone |
| - washingmachine | - central heating |
| - Energieausweis | |

References

Please read our Notes on currency conversion
under <http://www.homecompany.de/en/currency-info>

Website synopsis

<http://hamburg.homecompany.de/en/object/AG7059368>



Description

The apartment was in 2013 completely renovated and furnished. The bright wooden floor consists of the restored original floorboards and was very tastefully glazed white. The section of the apartment is open and modern; the apartment has two balconies and is flooded with light. The kitchen opens to the hallway. Living and dining room into one another; from the dining room you step out onto the sunny balcony. The bedroom is furnished with a double bed and offers plenty of storage space in the very appropriately designed modern wardrobes. The furniture is high quality, modern and tasteful. The rooms provide a cozy ambiance.

In the apartment smoking is not allowed.

A parking space can be rented additionally for 80,00 EUR per month.

Online viewing of the flat (360 ° panorama photos):

<http://panocreator.com/view/gallery/id/VR8QH>

Energy pass information acc. to § 16a EnEV 2014:

Type of energy pass: Consumption based energy pass

Final consumption value: 110.65 kWh/(m²*a)

Main source of heating energy heating: natural gas

Year of construction: 1924

Energy efficiency class: D

Print out 25.04.2024