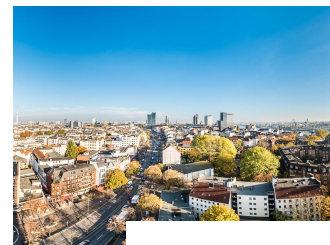
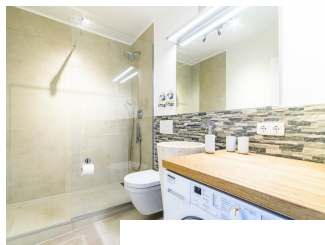


Furnished flat with a spectacular view over Hamburg and the harbour

short-term rental apartment	Rent incl. add. costs 1.450,00 EUR per Month	Living space ca. 44,00 qm	Number of rooms 1,5	Available from 01.10.2023
-----------------------------	---	------------------------------	------------------------	------------------------------

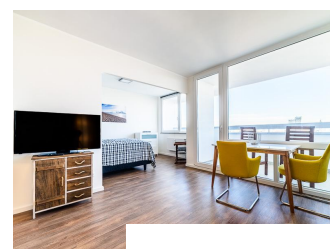
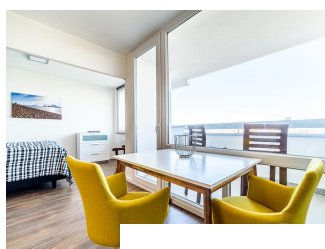
Other dates

District	Altona
Floor	16.Floor
Available until	Open-ended
Minimum rental length	365 days
Maximum number of tenants	1
Smoking / Nonsmoker	Non-smokers only
Balcony	yes
Elevator	Yes
Garden	No



Facilities

- | | |
|------------------|------------------------|
| - balcony | - bed-linnen |
| - towels | - dishwasher |
| - washingmachine | - bathroom with shower |
| - Internet | - built-in kitchen |
| - cable-TV | - central heating |
| - Energieausweis | |

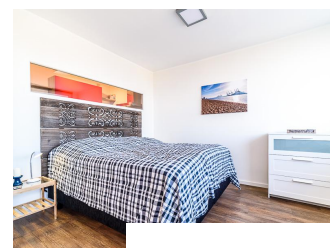


References

Please read our Notes on currency conversion under <http://www.homecompany.de/en/currency-info>

Website synopsis

<http://hamburg.homecompany.de/en/object/AG7073999>



Description

Nice furnished apartment with a spectacular view. The apartment is cut open, the living room is connected by a spacious passage to the bedroom which is furnished with a comfortable, 1.60 wide bed. The well-equipped kitchen with modern, held in red high-gloss, fronts is also accessible via the living room. In addition to the stove with oven is a microwave available. Through a beautiful design floor living, sleeping room and kitchen are optically connected. The bathroom is decorated with beautiful large-format tiles, the shower is separated with a glass partition.

The balcony extends over the entire width of the apartment and is oriented in direction east. It offers unique views over the entire city and over the Elbe and the harbor.

Online viewing of the flat (360 ° panorama photos):

<http://panocreator.com/view/gallery/id/VRZ8H>

Energy pass information acc. to § 16a EnEV 2014:

Type of energy pass: Energy demand certificate

Final demand value: 219 kWh/(m²*a)

Main source of heating energy heating: district heating

Year of construction: 1970

Print out 01.10.2023