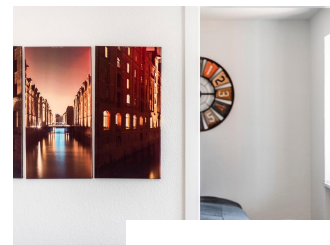


Quiet location with good access to the city center

short-term rental apartment	Rent incl. add. costs 990,00 EUR per Month	Living space ca. 37,00 qm	Number of rooms 2,0	Available from 01.10.2020
-----------------------------	---	------------------------------	------------------------	------------------------------

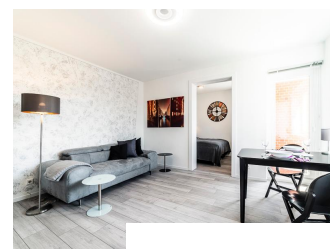
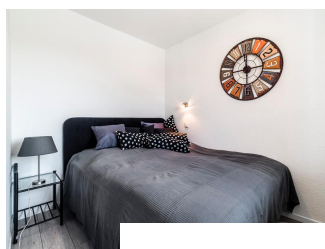
Other dates

District	Eimsbüttel
Floor	2.Floor
Available until	Open-ended
Minimum rental length	150 days
Maximum number of tenants	1
Smoking / Nonsmoker	Non-smokers only
Balcony	yes
Elevator	Yes
Garden	No



Facilities

- | | |
|------------------------|---------------------|
| - Energieausweis | - balcony |
| - bed-linnen | - towels |
| - bathroom with shower | - laminate flooring |
| - built-in kitchen | - central heating |
| - Internet | - washingmachine |
| - cable-TV | |

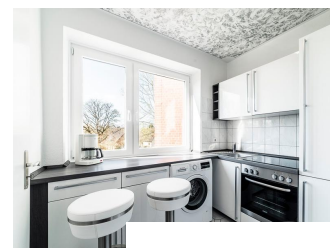
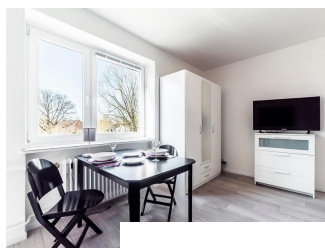


References

Please read our Notes on currency conversion under <http://www.homecompany.de/en/currency-info>

Website synopsis

<http://hamburg.homecompany.de/en/object/AG7080067>



Description

The beautifully cut bright apartment, furnished and renovated in 2017, is located in a friendly residential street in the north of Hamburg. On the sunny and quiet balcony, the end of work can be relaxed. The entire apartment is designed in a bright gray / white color scheme and radiates friendly serenity. The living room has a cozy large sofa and a small dining area directly in front of the window. The bedroom is equipped with a 1.60 m wide box spring bed and offers restful sleeping comfort. In the modern white fitted kitchen you will also find space for a small snack in between. A buttry is also available. The white bathroom has a spacious shower. The house has a large garden, which can be used very much. A garbage chute is located in the hallway With the nearby public transport you can reach the city of Hamburg in 30 minutes.

Online viewing of the flat (360 ° panorama photos):

<http://panocreator.com/view/gallery/id/VR38Q>

Energy pass information acc. to § 16a EnEV 2014:

Type of energy pass: Consumption based energy pass

Final consumption value: 171 kWh/(m²*a)

Main source of heating energy heating: light heating oil

Year of construction: 1965

Print out 20.02.2020