

Comfortly furnished flat in a new building in walking distance to the Elbe river in Hamburg Altona

short-term rental apartment	Rent incl. add. costs 1.700,00 EUR per Month	Living space ca. 45,00 qm	Number of rooms 2,0	Available from 01.09.2024
-----------------------------	---	------------------------------	------------------------	------------------------------

Other dates

District	Altona
Deposit	3.400,00 EUR
Floor	Bottom floor
Available until	Open-ended
Minimum rental length	180 days
Maximum number of tenants	2
Smoking / Nonsmoker	Non-smokers only
Balcony	yes
Elevator	No
Garden	Yes

Facilities

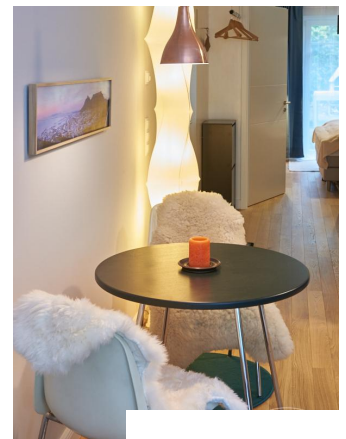
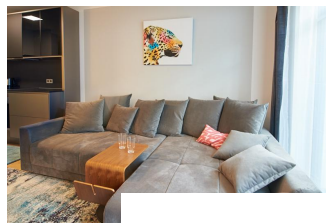
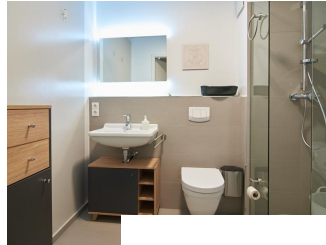
- | | |
|---------------------|------------------------|
| - bed-linnen | - towels |
| - dishwasher | - bathroom with shower |
| - parquett flooring | - built-in kitchen |
| - garden | - Internet |
| - cable-TV | - washingmachine |
| - Energieausweis | - terrace |

References

Please read our Notes on currency conversion under <http://www.homecompany.de/en/currency-info>

Website synopsis

<http://hamburg.homecompany.de/en/object/AG7084283>



Description

The apartment is located in a typical hamburg location and has a modern cut, living area and kitchen are merging. Due to the floor-to-ceiling windows, the rooms are particularly generous. The solid oak parquet with underfloor heating conveys high quality and comfort. Particularly noteworthy is the very nice fitted kitchen with dark fronts and anthracite-tinted glass doors. Adjacent is a round dining table in dark green black. The living area with XXL sofa, a sideboard in wood and marble veneer, bluetooth speaker and TV wall-mounted definitely invites you to relax. The bedroom has a 1.80 m wide double bed with Bonellfederkernmatratze available. The built-in wardrobe is optimally fitted in the room and offers a lot of storage space. The apartment has a terrace, which is accessible from the living area. In addition, a garden with barbecue facilities can be used. The apartment is very well shielded by the situation as a rear building.

360° view: <https://panocreator.com/view/fullscreen/id/VRPHZ>

Energy pass information acc. to § 16a EnEV 2014:

Type of energy pass: Energy demand certificate

Final demand value: 63,9 kWh/(m²*a)

Main source of heating energy heating: natural gas

Year of construction: 2016

Energy efficiency class: B

Print out 24.04.2024