

Newly furnished apartment in a vintage chic look with character and style in Hamburg Hoheluft

short-term rental apartment	Rent incl. add. costs 1.350,00 EUR per Month	Living space ca. 50,00 qm	Number of rooms 2,0	Available from 01.08.2020
-----------------------------	---	------------------------------	------------------------	------------------------------

Other dates

District	Eimsbüttel
Floor	2.Floor
Available until	Open-ended
Minimum rental length	120 days
Maximum number of tenants	1
Smoking / Nonsmoker	Non-smokers only
Balcony	yes
Elevator	No
Garden	No

Facilities

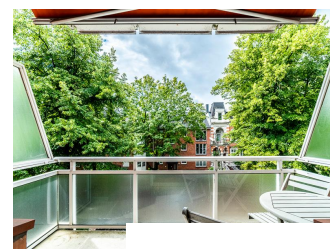
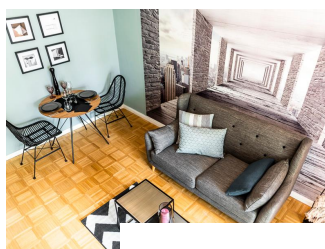
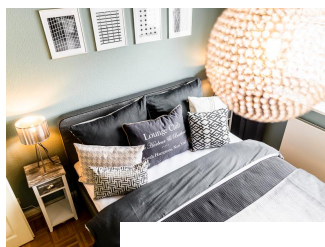
- | | |
|--------------------|-------------------------|
| - balcony | - dishwasher |
| - washing machine | - bathroom with bathtub |
| - parquet flooring | - built-in kitchen |
| - bed-linnen | - towels |
| - cable-TV | - kitchen |
| - central heating | - Internet |
| - Energieausweis | |

References

Please read our Notes on currency conversion under <http://www.homecompany.de/en/currency-info>

Website synopsis

<http://hamburg.homecompany.de/en/object/AG7084377>



Description

In July 2018 newly furnished stylish oasis in a central location for modern businessmen.

State-of-the-art elements combined with vintage chic make the rooms shine with elegance, character and style.

An urban, modern attitude to life is united here to a contemporary business look with originality:

The wall design in grey-blue tones and grey, black-and-white and wood tones in the selection of furniture create an atmosphere in which the living room furniture give the impression that they rather discreetly step back to give the unique wallpaper its grand entrance left.

Precious walnut and walnut wood and purpose-built vintage chic elements are cleverly combined with brass and zinc-colored and polished copper and chrome accessories

give the apartment an authentic, unique character and an exclusive touch. Color highlights set a black and white geometric-patterned carpet, a cool retro armchair in mauve and nice accessories to round off the feel-good atmosphere.

Online viewing of the flat (360 ° panorama photos):

<http://panocreator.com/view/gallery/id/VR21K>

energy pass information acc. to § 16a EnEV 2014:

Type of energy pass: Consumption based energy pass

Final consumption value: 145, kWh/(m²*a)

Main source of heating energy heating: gas

Year of construction: 1956

Energy efficiency class: E