

High quality and stylish business apartment in Hamburg Winterhude

short-term rental apartment	Rent incl. add. costs 1.200,00 EUR per Month	Living space ca. 32,00 qm	Number of rooms 1,0	Available from 01.05.2024
--------------------------------	---	------------------------------	------------------------	------------------------------

Other dates

District	Hamburg-Nord
Deposit	2.400,00 EUR
Floor	4.Floor
Available until	Open-ended
Minimum rental length	300 days
Maximum number of tenants	1
Smoking / Nonsmoker	Non-smokers only
Balcony	no
Elevator	No
Garden	No

Facilities

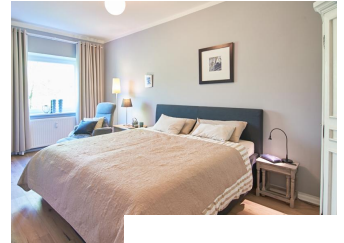
- washingmachine
- towels
- bathroom with shower
- Internet
- bed-linnen
- wooden flooring
- built-in kitchen
- Energieausweis

References

Please read our Notes on currency conversion under <http://www.homecompany.de/en/currency-info>

Website synopsis

<http://hamburg.homecompany.de/en/object/AG7085755>



Description

The apartment was extensively renovated. It has been redesigned with quality parquet flooring, a king size bed (180 x 200cm) and a cozy little lounge area. The bright separate kitchen is fully equipped with a modern fitted kitchen including a generous dining area, TV and a Siemens washer dryer. This small space miracle is located in the quiet end of a Hamburg old building, directly to the sunny south side. In a side street in the Jarrestadt the apartment is centrally located between the Alster and the popular Hamburg city park - in the middle of the beautiful district of Hamburg Winterhude. Here you get the right mix of idyll and pulsating life commanded. There are countless shops, restaurants and bars. The proximity to the Outer Alster and its canals, which invite to walks on the water, make Winterhude one of the most beautiful corners of Hamburg. Hamburg city center, the main train station and the airport can be reached quickly by public transport.

Characteristic of the Jarrestadt is a four- to six-story building development through residential buildings, all of which was made in the late 1920s in a uniform style using dark clinker. The area is under protection of milieu and historical monuments.

360° Tour: <https://panocreator.com/view/fullscreen/id/VRPDF>

Energy pass information acc. to § 16a EnEV 2014:

Type of energy pass: Consumption based energy pass

Final consumption value: 124,08 kWh/(m²*a)

Main source of heating energy heating: district heating

Year of construction: 1928

Energy efficiency category: D