

Stylish flat in popular Hamburg Ottensen

short-term rental apartment	Rent incl. add. costs 1.450,00 EUR per Month	Living space ca. 48,00 qm	Number of rooms 2,0	Available from 01.07.2024
--------------------------------	---	------------------------------	------------------------	------------------------------

Other dates

District	Altona
Deposit	2.000,00 EUR
Floor	2.Floor
Available until	Open-ended
Minimum rental length	365 days
Maximum number of tenants	1
Smoking / Nonsmoker	Non-smokers only
Balcony	yes
Elevator	No
Garden	No

Facilities

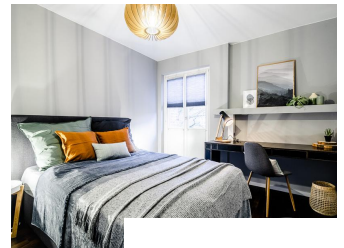
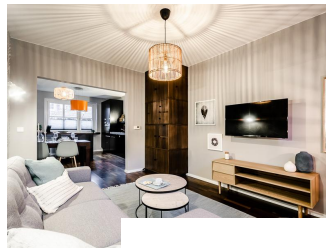
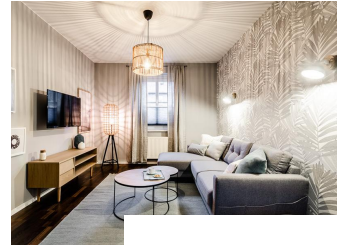
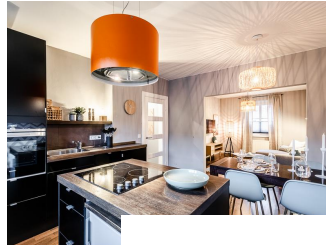
- Energieausweis	- balcony
- bed-linnen	- towels
- Internet	- parquett flooring
- built-in kitchen	- dishwasher
- washingmachine	- bathroom with shower
- cable-TV	- living kitchen

References

Please read our Notes on currency conversion
under <http://www.homecompany.de/en/currency-info>

Website synopsis

<http://hamburg.homecompany.de/en/object/AG7086100>



Description

This complete furnished apartment is a high quality oasis of peace in the popular district Ottensen. The nature @ work style combines an urban, modern lifestyle with a contemporary stylish business look, comfort, originality and an urban, multi-faceted furnishing style. The large kitchen is kept open to the living room. The bright daylight bathroom has been equipped with a new shower and a washing machine. The 1.40 m box spring bed guarantees high sleeping comfort. From the bedroom you can reach the small balcony and the large, walk-in wardrobe. The built-in wardrobes in the hallway further storage options. Virtual flat visit with 360 ° views:

<http://panocreator.com/view/gallery/id/VRHD5>

Details of the energy certificate according to § 16a EnEV 2014:

Type of energy pass: Energy requirement pass

Value of final energy consumption: 119.8 kWh / (m² * a)

Essential energy source for heating the building: natural gas

Building year: 1938

Energy efficiency class: D

Energy pass information acc. to § 16a EnEV 2014:

Type of energy pass: Energy demand certificate

Final demand value: 119,8 kWh/(m²*a)

Main source of heating energy heating: natural gas

Year of construction: 1938

Energy efficiency class: D