

Classic Elegance & Urban Chic between exhibition halls and university

short-term rental apartment	Rent incl. add. costs 1.550,00 EUR per Month	Living space ca. 47,58 qm	Number of rooms 2,0	Available from 01.07.2024
--------------------------------	-------------------------------------------------	------------------------------	------------------------	------------------------------

Other dates

District	Eimsbüttel
Deposit	1.550,00 EUR
Floor	3.Floor
Available until	Open-ended
Minimum rental length	180 days
Maximum number of tenants	2
Smoking / Nonsmoker	Non-smokers only
Balcony	no
Elevator	No
Garden	No

Facilities

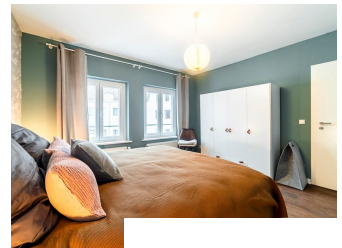
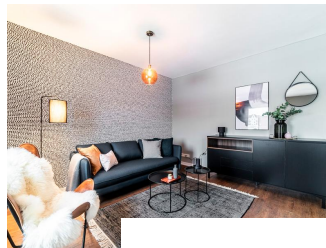
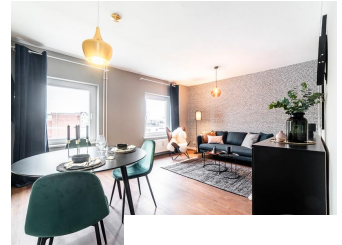
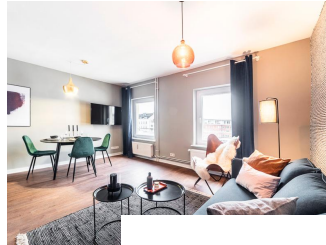
- Energieausweis	- bed-linnen
- towels	- Internet
- cable-TV	- dishwasher
- washingmachine	- bathroom with shower
- PVC	

References

Please read our Notes on currency conversion under <http://www.homecompany.de/en/currency-info>

Website synopsis

<http://hamburg.homecompany.de/en/object/AG7086744>



Description

This furnished 2-room flat in Hamburg Rotherbaum impresses with its stylish facilities and the central, but quiet location. Not only comfort, but also design and style can be found in this apartment. Unique, visual highlights, such as the trendy wallpaper or the special furniture create the stylish and modern living atmosphere. A bright and open living area invites you to relax with its comfortable sofa and trendy Butterfly Chair. Those who value cozy TV hours can enjoy them with the big Smart TV. A 180 cm wide box spring bed and an elegantly designed bedroom promise rest and relaxation after work. Sufficient storage space is provided by the wide wardrobe and a sideboard.

The open kitchen is additionally equipped with a washing machine, a dishwasher and a Nespresso coffee machine. The apartment is located in a quiet side street.

The total rent of 1550.00 EUR includes 30.00 EUR (incl. 19% VAT) for internet flatrate / wireless and broadcasting fee. The net rent of EUR 1420.56 is plus VAT applicable from time to time, currently 7% (EUR 99.44).

Rental duration: maximum 6 calendar months

Online viewing of the flat (360 ° panorama photos):

<http://panocreator.com/view/gallery/id/VRLFG>

Energy pass information acc. to § 16a EnEV 2014:

Type of energy pass: Energy demand certificate

Final demand value: 114 kWh/(m²*a)

Main source of heating energy heating: natural gas

Year of construction: 1907

Energy efficiency category: D