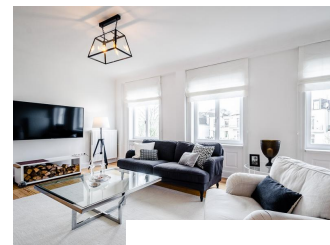


Premium flat in an exclusive Hamburg residential area nearby the Alster

short-term rental apartment	Rent incl. add. costs 2.800,00 EUR per Month	Living space ca. 116,00 qm	Number of rooms 3,0	Available from 01.01.2024
-----------------------------	---	-------------------------------	------------------------	------------------------------

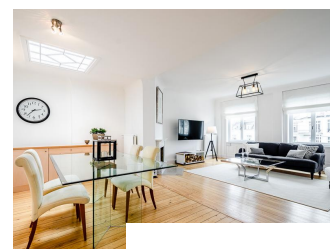
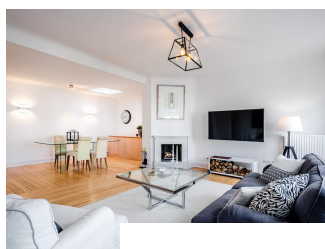
Other dates

District	Harvestehude
Floor	2.Floor
Available until	Open-ended
Minimum rental length	180 days
Maximum number of tenants	2
Smoking / Nonsmoker	Non-smokers only
Balcony	yes
Elevator	No
Garden	No



Facilities

- separate bedrooms
- built-in kitchen
- balcony
- bed-linnen
- dishwasher
- Internet
- wooden flooring
- living kitchen
- towels
- washingmachine
- cable-TV
- Energieausweis



References

Please read our Notes on currency conversion under <http://www.homecompany.de/en/currency-info>

Website synopsis

<http://hamburg.homecompany.de/en/object/AG7086874>

Description

The apartment is located in a prestigious residential area. In just three minutes, the Alster lake can be reached, as well as the Eichtalpark. Upscale shopping is available in the vicinity at Eppendorfer Baum and in Winterhude abundant. The house was completely renovated in 2015. All rooms are furnished with light wooden floors.

The spacious living room with bright upholstered furniture and 58 inch Samsung TV merges into the dining room with original skylight. The living room has a working fireplace. One of the bedrooms is equipped with a 1.80 m wide box spring bed and plenty of room in the wardrobe. From here, the balcony, which is oriented towards the beautifully landscaped garden, can be reached. The second bedroom has a 1.40 m wide boxspring bed. The generously sized kitchens include a breakfast bar.

The bathroom is equipped with two vanities, a shower and a separate toilet. From the hallway is a walk-in closet with shoe rack.

Optionally, a representative showroom can also be rented for a business appointment.

Online viewing of the flat (360 ° panorama photos): <http://panocreator.com/view/gallery/id/VRLMQ>

Online viewing of the showroom (360 ° panorama photos): <http://panocreator.com/view/gallery/id/VRLW7>

Energy pass information acc. to § 16a EnEV 2014:

Type of energy pass: Consumption based energy pass

Final consumption value: 91 kWh/(m²*a)

Main source of heating energy heating: district heating

Year of construction: 1897

Energy efficiency class: C

Print out 01.10.2023