

## Modern and very central - only 10 minutes to the Hamburgs city center

short-term rental apartment	Rent incl. add. costs 1.250,00 EUR per Month	Living space ca. 46,00 qm	Number of rooms 2,0	Available from 01.02.2025
--------------------------------	---	------------------------------	------------------------	------------------------------

### Other dates

District	Hamburg-Mitte
Deposit	2.500,00 EUR
Floor	4.Floor
Available until	Open-ended
Minimum rental length	270 days
Maximum number of tenants	1
Smoking / Nonsmoker	Non-smokers only
Balcony	yes
Elevator	Yes
Garden	No

### Facilities

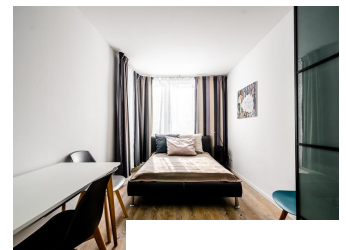
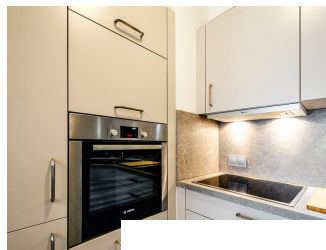
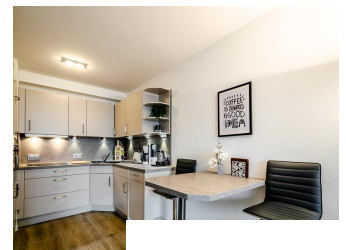
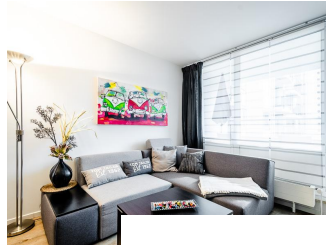
- |                    |                        |
|--------------------|------------------------|
| - bed-linnen       | - towels               |
| - PVC              | - washingmachine       |
| - built-in kitchen | - bathroom with shower |
| - balcony          | - dishwasher           |
| - cable-TV         | - Internet             |
| - Energieausweis   |                        |

### References

Please read our Notes on currency conversion  
under <http://www.homecompany.de/en/currency-info>

### Website synopsis

<http://hamburg.homecompany.de/en/object/AG7086929>



### Description

Modern furnished apartment with open kitchen and balcony. The apartment overlooks the green courtyard. In the house can be used in addition to the apartment's own washing machine, a laundry room with dryer. The city center can be reached by car in 10 minutes. From the pedestrian S-Bahn Rothenburgsort there are 2 stations to the main station. The bus stop Billhorner Mühlenweg is only a 5-minute walk away; from here you can get to the city center with the bus lines 3 and 124 in just 10 minutes. In the immediate vicinity is also the Golf Lounge Hamburg. The area offers green open spaces and a special charm. Right on the doorstep is the Elbpark-Entenwerder, which invites to numerous leisure activities such as jogging on the Elbe or the four and Marschlanden or outdoor barbecues with friends.

Online viewing of the flat (360 ° panorama photos):

<http://panocreator.com/view/gallery/id/VRG7Y>

Energy pass information acc. to § 16a EnEV 2014:

Type of energy pass: Energy demand certificate

Final demand value: 145,6 kWh/(m²\*a)

Main source of heating energy heating: natural gas

Year of construction: 1994