

Apartment with a view and private parking space

short-term rental apartment	Rent incl. add. costs 1.050,00 EUR per Month	Living space ca. 35,00 qm	Number of rooms 1,0	Available from 01.10.2024
--------------------------------	---	------------------------------	------------------------	------------------------------

Other dates

District	Eimsbüttel
Deposit	2.100,00 EUR
Floor	7.Floor
Available until	Open-ended
Minimum rental length	365 days
Maximum number of tenants	1
Smoking / Nonsmoker	Non-smokers only
Balcony	no
Elevator	Yes
Garden	No

Facilities

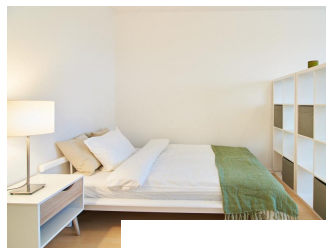
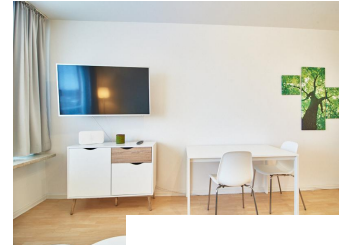
- | | |
|------------------------|---------------------|
| - bed-linnen | - towels |
| - built-in kitchen | - laminate flooring |
| - bathroom with shower | - cable-TV |
| - Internet | - washingmachine |
| - Energieausweis | |

References

Please read our Notes on currency conversion under <http://www.homecompany.de/en/currency-info>

Website synopsis

<http://hamburg.homecompany.de/en/object/AG7087286>



Description

In 2019 newly furnished apartment with a view over the city. The living / bedroom is divided by a room divider into a living and a sleeping area. The living area facing the window has a small sofa area, TV and a dining table. In the sleeping area is a 1.40 wide bed available. The fitted wardrobes in the hallway provide plenty of room, both for clothing and for all household appliances. The fresh white tiled bathroom with anthracite floor tiles impresses with freshness and clarity. The small kitchen is equipped with a white fitted kitchen. In addition, a small, outgoing hall, the chamber is available as a wardrobe. In the basement of the house is the very well equipped laundry with 3 washing machines, dryer and large slingshot. All devices are coin operated and are operated with EUR coins.

The apartment has an outdoor parking space for cars, which is located on the grounds of the condominium.

Optionally, a cleaning service can be booked.

Online viewing of the flat (360 ° panorama photos:

<https://tour.feelestate.com/view/fullscreen/id/VVTZ7>

Energy pass information acc. to § 16a EnEV 2014:

Type of energy pass: Consumption based energy pass

Final consumption value: 145 kWh/(m²*a)

Main source of heating energy heating: heating oil light

Year of construction: 163

Energy efficiency class: E