

## Stylish flat in Hamburg Eimsbüttel with nice balcony

short-term rental apartment	Rent incl. add. costs 1.600,00 EUR per Month	Living space ca. 52,00 qm	Number of rooms 2,0	Available from 01.06.2024
--------------------------------	---	------------------------------	------------------------	------------------------------

### Other dates

District	Eimsbüttel
Deposit	3.200,00 EUR
Floor	2.Floor
Available until	Open-ended
Minimum rental length	270 days
Maximum number of tenants	2
Smoking / Nonsmoker	Non-smokers only
Balcony	yes
Elevator	Yes
Garden	No

### Facilities

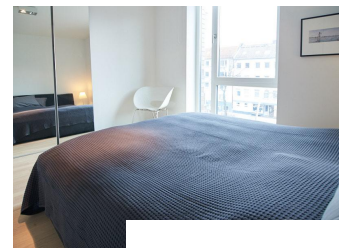
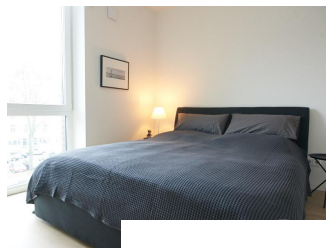
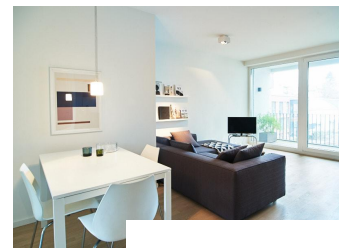
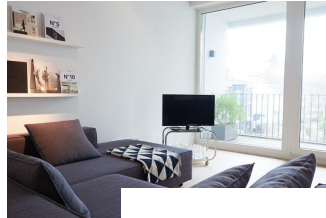
- |                    |                        |
|--------------------|------------------------|
| - balcony          | - bed-linnen           |
| - towels           | - bathroom with shower |
| - built-in kitchen | - cable-TV             |
| - dishwasher       | - washingmachine       |
| - Energieausweis   |                        |

### References

Please read our Notes on currency conversion under <http://www.homecompany.de/en/currency-info>

### Website synopsis

<http://hamburg.homecompany.de/en/object/AG7087404>



### Description

Stylish. Furnished and perfectly equipped apartment in a good location in a new building in Eimsbüttel. The open plan kitchen to the living room is decorated in modern brown and gray tones. In the living room, the large corner sofa invites you to relax after work. A dining table with four chairs is available. Through the floor-to-ceiling windows, the living room is visually extended to the area of the adjacent large balcony. On summer evenings, this place invites you to barbecue with the electric grill. The bedroom is equipped with a 1.60 wide double bed and plenty of closet space.

The bathroom, decorated in subtle dark brown tones, also offers all the comforts of a well-equipped apartment. The underfloor heating can be controlled separately in each room. Starting from the corridor there is a room with washing machine and household items.

Typically for Eimsbüttel various cafes and restaurants can be reached on foot.

Energy pass information acc. to § 16a EnEV 2014:

Type of energy pass: Energy demand certificate

Final demand value: 55,4 kWh/(m²\*a)

Main source of heating energy heating: district heating

Year of construction: 2015

Energy efficiency class: B

Print out 01.05.2024