

## Furnished attic in Hamburg Eimsbüttel

short-term rental apartment	Rent incl. add. costs 1.550,00 EUR per Month	Living space ca. 54,00 qm	Number of rooms 2,0	Available from 05.05.2024
--------------------------------	---	------------------------------	------------------------	------------------------------

### Other dates

District	Eimsbüttel
Deposit	3.100,00 EUR
Floor	5.Floor
Available until	Open-ended
Minimum rental length	365 days
Maximum number of tenants	1
Smoking / Nonsmoker	Non-smokers only
Balcony	yes
Elevator	No
Garden	No

### Facilities

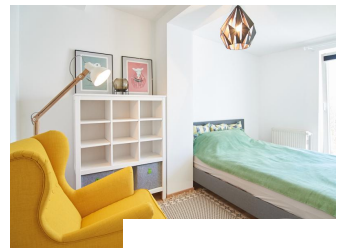
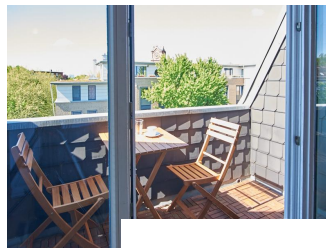
- |                         |                  |
|-------------------------|------------------|
| - balcony               | - washingmachine |
| - built-in kitchen      | - dishwasher     |
| - bed-linnen            | - towels         |
| - Internet              | - phone          |
| - Energieausweis        | - cable-TV       |
| - bathroom with bathtub |                  |

### References

Please read our Notes on currency conversion  
under <http://www.homecompany.de/en/currency-info>

### Website synopsis

<http://hamburg.homecompany.de/en/object/AG7088394>



### Description

Located in a quiet residential street in Eimsbüttel apartment located in the attic of a well-kept Hamburg old building. The living-dining area with open kitchen is very bright and spatially designed, white-clad beams and the high ceiling in the First create a generous and exciting sense of space. A special highlight is the sheltered balcony, which is not upstream, but integrated into the floor plan.

Also from the bedroom window offers a beautiful open view. Here you can see far into the green landscaped gardens in the courtyard.

The bedroom is equipped with a 1.40 wide box spring bed. Wardrobe, wardrobe and shoe rack are in a small separate dressing room.

In addition, a small storage room for suitcases and household utensils is available.

The shops, the pretty cafés and restaurants of the district are typical of the location in the lively district Eimsbüttel

Energy pass information acc. to § 16a EnEV 2014:

Type of energy pass: Energy demand certificate

Final demand value: 143,8 kWh/(m²\*a)

Main source of heating energy heating: Gas

Year of construction: 1889

Energy efficiency class: E

Print out 05.05.2024