

## Urban jungle between university and fair

short-term rental apartment	Rent incl. add. costs 1.300,00 EUR per Month	Living space ca. 34,44 qm	Number of rooms 2,0	Available from 01.11.2024
--------------------------------	---	------------------------------	------------------------	------------------------------

### Other dates

District	Eimsbüttel
Deposit	2.600,00 EUR
Floor	2.Floor
Available until	Open-ended
Minimum rental length	365 days
Maximum number of tenants	1
Smoking / Nonsmoker	Non-smokers only
Balcony	no
Elevator	No
Garden	No

### Facilities

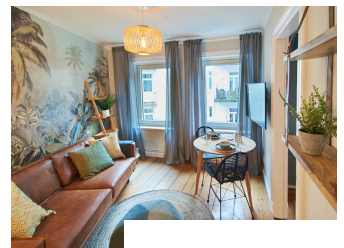
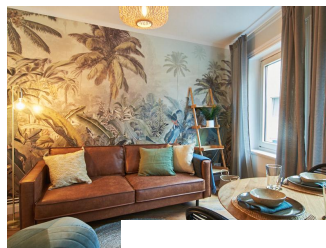
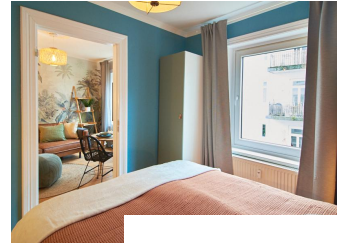
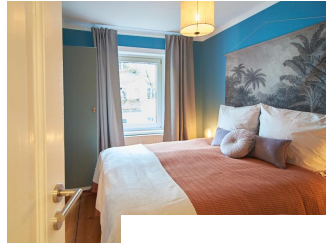
- |                     |                         |
|---------------------|-------------------------|
| - built-in kitchen  | - bathroom with bathtub |
| - parquett flooring | - wooden flooring       |
| - tiles             | - dishwasher            |
| - bed-linnen        | - towels                |
| - ISDN              | - Energieausweis        |
| - washingmachine    | - Internet              |
| - cable-TV          |                         |

### References

Please read our Notes on currency conversion  
under <http://www.homecompany.de/en/currency-info>

### Website synopsis

<http://hamburg.homecompany.de/en/object/AG7089144>



### Description

Urban Jungle- An ongoing interior trend that does not lose importance due to its fresh and at the same time calm effect.

The highlight of the apartment is the designer wallpaper "Amazonia", which shows the tropical rainforest. The different shades of green and earth can be found in the furniture and accessories. An exciting contrast to this are cool elements, such as the bright blue wall color in the bedroom and the elegant gray in the living and dining area. This gives the solid wood furniture and the leather-look sofa even more radiance and warmth. Natural materials such as bast, rattan, wood and linen underline the natural, urban look. The quiet location in the back house offers relaxation after work in close proximity to the vibrant life of the city. The bedroom has a 1.6 m wide box spring bed and a large wardrobe. In addition, there is a chamber in the hallway with an integrated cloakroom and plenty of storage space.

Grindel and Schanzenviertel are within walking distance. Bars, restaurants and cafes as well as shops for everyday needs and small diverse shops are within easy reach. The trade fair and university are in the vicinity.

360° round view: <https://tour.feelestate.com/view/fullscreen/id/VV8J7>

Energy pass information acc. to § 16a EnEV 2014:

Type of energy pass: Consumption based energy pass

Final consumption value: 110.9 kWh/(m²\*a)

Main source of heating energy heating:

Year of construction:

Energy efficiency class: D