

Perfectly equipped business apartment close to Airbus, Hamburg Ottensen and Altona

short-term rental apartment	Rent incl. add. costs 990,00 EUR per Month	Living space ca. 24,00 qm	Number of rooms 1,0	Available from 01.06.2024
-----------------------------	---	------------------------------	------------------------	------------------------------

Other dates

District	Altona
Deposit	1.980,00 EUR
Floor	3.Floor
Available until	Open-ended
Minimum rental length	365 days
Maximum number of tenants	1
Smoking / Nonsmoker	Non-smokers only
Balcony	yes
Elevator	Yes
Garden	No

Facilities

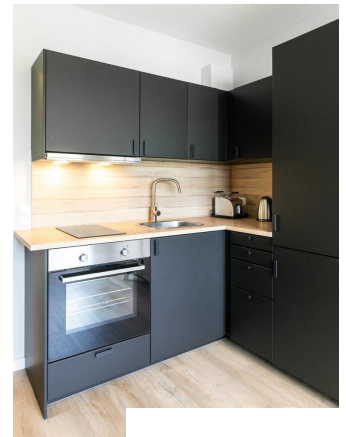
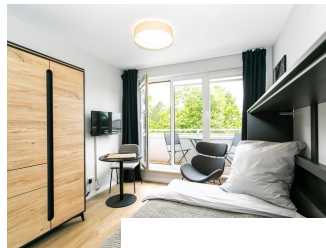
- | | |
|--------------------|------------------------|
| - balcony | - Energieausweis |
| - bed-linnen | - towels |
| - washingmachine | - bathroom with shower |
| - built-in kitchen | - Internet |
| - cable-TV | - PVC |

References

Please read our Notes on currency conversion under <http://www.homecompany.de/en/currency-info>

Website synopsis

<http://hamburg.homecompany.de/en/object/AG7090260>



Description

The modern business apartment with a wonderfully quiet balcony and northern charm style is located in contemporary gray and black tones in combination with light ash wood. The business tenant will find comfort in a small space.. Ideal for professionals, commuters, project people and new Hamburgers who prefer good value for money and maintain the coveted west of the city. The 1.20 x 2 m large fold-away bed has a mattress of a good quality. There is also a stylish armchair and a small dining or work area. The beautiful wardrobe and the shoe cabinet offer storage space. The washing machine is part of the complete new fitted kitchen. Furthermore, there is a washroom with washing machine and dryer in the basement of the house.

The coveted location in the west of Hamburg is ideal: it is only 15 minutes to Hamburg city center, 10 minutes to the popular Ottensen and Altona, also to the Elbe and the Teufelsbrück ferry pier.

Online viewing of the flat (360 ° panorama photos):

<https://tour.feelestate.com/view/fullscreen/id/VV5DD>

Energy pass information acc. to § 16a EnEV 2014:

Type of energy pass: Consumption based energy pass

Final consumption value: 89,4 kWh/(m²*a)

Main source of heating energy heating: district heating, fossil

Year of construction: 1996

Energy efficiency class: C

Print out 02.05.2024