

## Living comfort in a tasteful ambience - atmosphere in Blankenese

|                                |   |                              |                        |                              |
|--------------------------------|---|------------------------------|------------------------|------------------------------|
| short-term rental<br>apartment | Rent incl. add. costs<br>1.350,00 EUR per Month | Living space ca.<br>60,00 qm | Number of rooms<br>2,0 | Available from<br>01.01.2025 |
|--------------------------------|---|------------------------------|------------------------|------------------------------|

### Other dates

|                           |                  |
|---------------------------|------------------|
| District                  | Altona           |
| Deposit                   | 2.700,00 EUR     |
| Floor                     | Bottom floor     |
| Available until           | Open-ended       |
| Minimum rental length     | 240 days         |
| Maximum number of tenants | 2                |
| Smoking / Nonsmoker       | Non-smokers only |
| Balcony                   | yes              |
| Elevator                  | No               |
| Garden                    | No               |

### Facilities

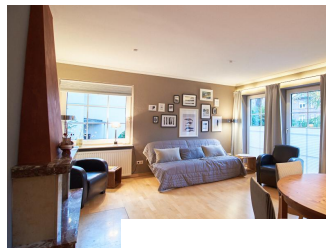
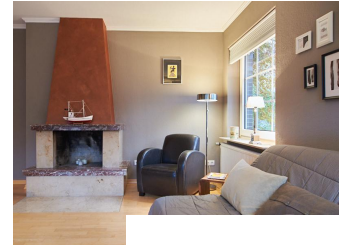
- |                        |                     |
|------------------------|---------------------|
| - balcony              | - built-in kitchen  |
| - bathroom with shower | - parquett flooring |
| - dishwasher           | - tiles             |
| - satellite-TV         | - HIFI              |
| - gas-heating          | - washingmachine    |
| - Energieausweis       | - Internet          |
| - bed-linnen           | - towels            |

### References

Please read our Notes on currency conversion under <http://www.homecompany.de/en/currency-info>

### Website synopsis

<http://hamburg.homecompany.de/en/object/AG7090446>



### Description

The flat, located on the mezzanine floor with parquet floors, is stylishly and modernly furnished in finely coordinated brown tones and conveys an upscale, comfortable feeling of living. An open deco-fireplace underlines the cozy atmosphere (cannot be used as chimney). There are two televisions available, one in the living room and one in the bedroom. The bedroom is equipped with a 1.60 wide double bed. Directly next to the adjacent bedroom is the brightly tiled shower room with an outside window. The toilet is separate and accessible from the hallway. All outside windows are lockable. The Blankenese S-Bahn is within easy walking distance. A communal garden equipped with garden furniture can be used at the rear of the property.

The rental price includes an underground parking space for cars (not suitable for SUVs).

360° round view: <https://tour.feelestate.com/view/fullscreen/id/VV8HF>

Energy pass information acc. to § 16a EnEV 2014:

Type of energy pass: Consumption based energy pass

Final consumption value: 94,1 kWh/(m²\*a)

Main source of heating energy heating: Gas

Year of construction: 1981

Energy efficiency class: C