

## Furnished flat with 2 bedrooms between Hamburg Altona and St. Pauli

short-term rental apartment	Rent incl. add. costs 2.000,00 EUR per Month	Living space ca. 65,00 qm	Number of rooms 3,0	Available from 01.09.2024
--------------------------------	---	------------------------------	------------------------	------------------------------

### Other dates

District	Altona
Deposit	4.000,00 EUR
Floor	3.Floor
Available until	Open-ended
Minimum rental length	270 days
Maximum number of tenants	2
Smoking / Nonsmoker	Non-smokers only
Balcony	no
Elevator	No
Garden	No

### Facilities

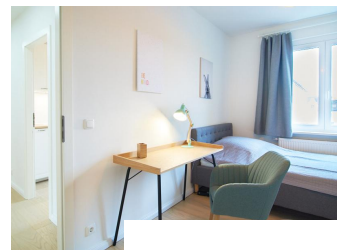
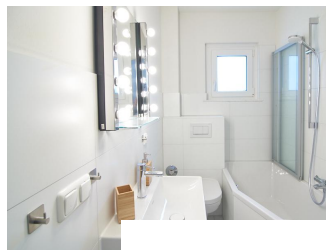
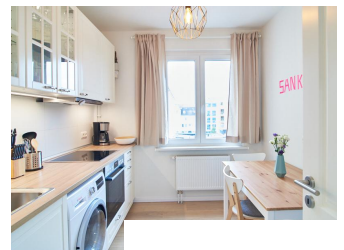
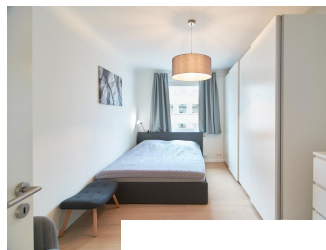
- |                         |                     |
|-------------------------|---------------------|
| - bed-linnen            | - built-in kitchen  |
| - dishwasher            | - separate bedrooms |
| - towels                | - Internet          |
| - cable-TV              | - parquett flooring |
| - bathroom with bathtub | - washingmachine    |
| - living kitchen        | - Energieausweis    |

### References

Please read our Notes on currency conversion  
under <http://www.homecompany.de/en/currency-info>

### Website synopsis

<http://hamburg.homecompany.de/en/object/AG7092438>



### Description

Despite the central location, the apartment is very quiet in a side street. A pleasantly spacious sofa area is available in the living room. Netflix and similar services are preinstalled on the flat screen TV (smart TV), all you need to do is register with your personal account. A retro-style Bluetooth box is also available. One of the bedrooms is equipped with a 1.60 bed, the other with a 1.20 wide bed. On request, a crib 120x200cm or 70x140cm can be placed in the children's room. Sufficient cupboard space is available in each case. A dining table for up to three people is available in the kitchen. A washer dryer is available. The apartment is perfect for two colleagues or a small family. Online viewing of the flat (360 ° panorama photos): <https://tour.feelstate.com/view/fullscreen/id/VV0Y3>  
 Energy pass information acc. to § 16a EnEV 2014:  
 Type of energy pass: Energy demand certificate  
 Final demand value: 112,5 kWh/(m²\*a)  
 Main source of heating energy heating: Natural Gas  
 Year of construction: 1953  
 Energy efficiency class: D

Print out 02.05.2024