

Feel good - business flat on the quiet edge of the popular Schanze

short-term rental apartment	Rent incl. add. costs 1.400,00 EUR per Month	Living space ca. 47,00 qm	Number of rooms 2,5	Available from 01.06.2025
--------------------------------	---	------------------------------	------------------------	------------------------------

Other dates

District	Eimsbüttel
Deposit	2.800,00 EUR
Floor	2.Floor
Available until	Open-ended
Minimum rental length	365 days
Maximum number of tenants	1
Smoking / Nonsmoker	Non-smokers only
Balcony	no
Elevator	No
Garden	No

Facilities

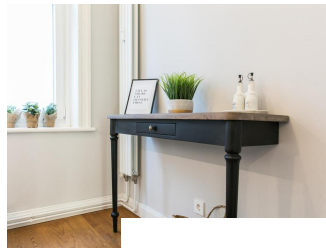
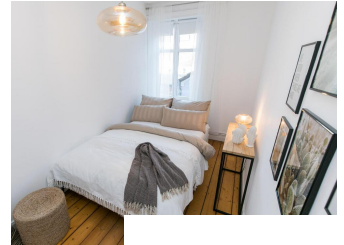
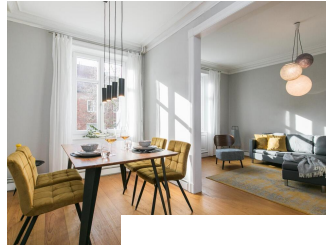
- | | |
|--------------------|------------------------|
| - bed-linnen | - bathroom with shower |
| - built-in kitchen | - Energieausweis |
| - dishwasher | - towels |
| - Internet | - washingmachine |
| - wooden flooring | - cable-TV |

References

Please read our Notes on currency conversion under <http://www.homecompany.de/en/currency-info>

Website synopsis

<http://hamburg.homecompany.de/en/object/AG7093483>



Description

The apartment, newly furnished in 2021, on the quiet edge of the popular Schanzenviertel, impresses with its homely and cozy atmosphere. The skirting board heating ensures pleasant room air and even heat distribution. The Pitchpine-floorboards, the subtle stucco in the living and dining area and the beautiful window cladding also contribute to the feel-good atmosphere.

The living room, which is open to the dining room is furnished in light, cozy colors and offers enough space for cozy evenings. The very beautiful, 1.60 m x 90 cm dining table in teak and black is a timeless classic and the cool dining chairs in curry-colored velvet and black metal legs round off the new, trendy and fresh business look.

The 1.40 x 2 m bed with a high-quality 7-zone pocket spring mattress in H3 / H4 ensures optimal ventilation, good body adaptation and a restful sleep.

Online viewing of the flat (360 ° panorama photos):

<https://tour.feelestate.com/view/fullscreen/id/VV1N3>

Energy pass information acc. to § 16a EnEV 2014:

Type of energy pass: Consumption based energy pass

Final consumption value: 127,7 kWh/(m²*a)

Main source of heating energy heating: natural gas

Year of construction: 1900

Energy efficiency class: D