

## Quiet location on St. Pauli

short-term rental apartment	Rent incl. add. costs 1.450,00 EUR per Month	Living space ca. 50,00 qm	Number of rooms 2,0	Available from 01.09.2024
--------------------------------	---	------------------------------	------------------------	------------------------------

### Other dates

District	Altona
Deposit	2.900,00 EUR
Floor	1.Floor
Available until	Open-ended
Minimum rental length	270 days
Maximum number of tenants	1
Smoking / Nonsmoker	Non-smokers only
Balcony	no
Elevator	No
Garden	No

### Facilities

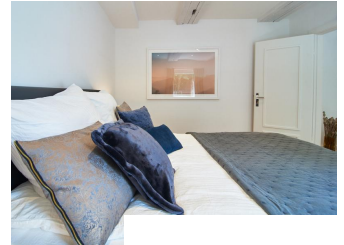
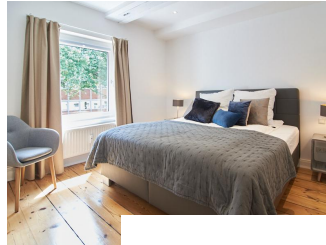
- |                   |                         |
|-------------------|-------------------------|
| - dishwasher      | - washingmachine        |
| - Energieausweis  | - bed-linnen            |
| - wooden flooring | - built-in kitchen      |
| - towels          | - bathroom with bathtub |
| - living kitchen  | - Internet              |
| - antenna-TV      |                         |

### References

Please read our Notes on currency conversion under <http://www.homecompany.de/en/currency-info>

### Website synopsis

<http://hamburg.homecompany.de/en/object/AG7094723>



### Description

The bright and very centrally located, quiet apartment, which was furnished in June 2021, is in the immediate vicinity of Wohlers Park.

There is a modern design element between the entrance area and the living room, which gives the interior design a special charm and a spacious feeling.

Particularly noteworthy are the built-in cupboards made to measure by a carpenter in the hallway and living room, some of which are equipped with interior lighting.

The kitchen-living room impresses every cooking enthusiast with its generous work surfaces. It also has a window that faces the green courtyard.

The bathroom, designed in light tiles, also has a window and is characterized by its clear lines.

A pull-out sofa bed is available as a guest bed in the living room.

Individual lighting moods can be created through separately switchable room lighting.

The bedroom is equipped with a 1.80 m wide box spring bed.

A modern video intercom is available on the outer door.

Online viewing of the flat (360 ° panorama photos):

<https://tour.feelestate.com/view/fullscreen/id/VVKDX>

Energy pass information acc. to § 16a EnEV 2014:

Type of energy pass: Consumption based energy pass

Final consumption value: 175,6 kWh/(m²\*a)

Main source of heating energy heating: natural gas

Year of construction: 1900