

## Elbe suburb of Groß-Flottbek Ideal for 2 colleagues or a family with 1 child

short-term rental apartment	Rent incl. add. costs 1.800,00 EUR per Month	Living space ca. 68,00 qm	Number of rooms 3,0	Available from 01.09.2024
--------------------------------	---	------------------------------	------------------------	------------------------------

### Other dates

District	Altona
Deposit	3.600,00 EUR
Floor	1.Floor
Available until	Open-ended
Minimum rental length	210 days
Maximum number of tenants	2
Smoking / Nonsmoker	Non-smokers only
Balcony	yes
Elevator	No
Garden	No

### Facilities

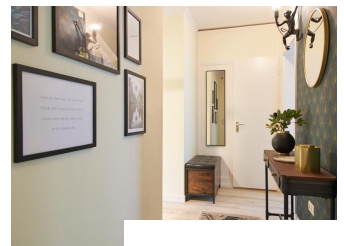
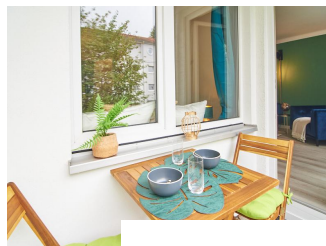
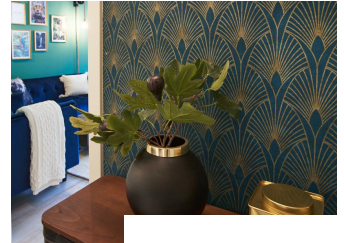
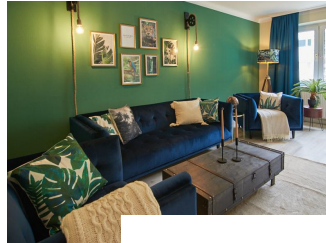
- |                        |                    |
|------------------------|--------------------|
| - balcony              | - built-in kitchen |
| - living kitchen       | - washingmachine   |
| - bathroom with shower | - dishwasher       |
| - bed-linnen           | - towels           |
| - cable-TV             | - Internet         |
| - separate bedrooms    | - Energieausweis   |

### References

Please read our Notes on currency conversion  
under <http://www.homecompany.de/en/currency-info>

### Website synopsis

<http://hamburg.homecompany.de/en/object/AG7095116>



### Description

Stylish. Extraordinary. Industrial. The ideal company apartment including two bedrooms and one balcony.

For people working on projects with two colleagues or a small family.

The apartment can be found in a calm side street, the Elbe is within walking distance. It was renovated in 2021 and fully furnished.

There is a car parking space at the property.

In the livingroom is a comfortable couch area which is colored marine blue. The dining table is made out of wood and has got some metallic elements in it. It invites to have chat or to dine in a relaxed atmosphere. Adjacent to the living room is the balcony. One of the sleeping room has got a box spring bed (width 1,60m) and the other one an upholstered bed (width 1,40).

Next to the hallway you can find the huge walk-in wardrobe with well thought-out logistics.

A parking space assigned to the house can only be used for cars.

Online viewing of the flat (360 ° panorama photos):

<https://tour.feelestate.com/view/fullscreen/id/VV65V>

Energy pass information acc. to § 16a EnEV 2014:

Type of energy pass: Energy demand certificate

Final demand value: 120 kWh/(m²\*a)

Main source of heating energy heating: District / local heating

Year of construction: 1964

Energy efficiency class: D