

## Central, near the Alster, extensive service

short-term rental apartment	Rent incl. add. costs 1.600,00 EUR per Month	Living space ca. 38,00 qm	Number of rooms 2,0	Available from 01.06.2024
--------------------------------	---	------------------------------	------------------------	------------------------------

## Other dates

District	Hamburg-Mitte
Deposit	1.600,00 EUR
Floor	1.Floor
Available until	Open-ended
Minimum rental length	90 days
Maximum number of tenants	2
Smoking / Nonsmoker	Non-smokers only
Balcony	yes
Elevator	Yes
Garden	No

## Facilities

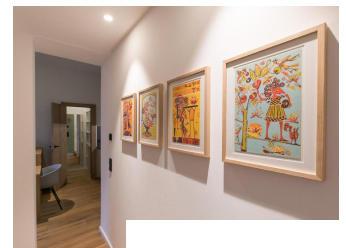
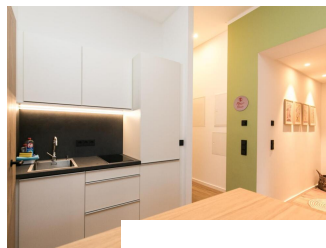
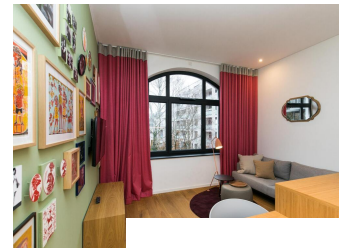
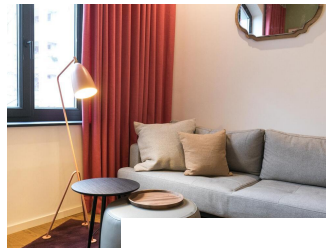
- |                        |                     |
|------------------------|---------------------|
| - balcony              | - kitchen           |
| - bathroom with shower | - parquett flooring |
| - dishwasher           | - bed-linnen        |
| - towels               | - cable-TV          |
| - Internet             | - Energieausweis    |

## References

Please read our Notes on currency conversion  
under <http://www.homecompany.de/en/currency-info>

## Website synopsis

<http://hamburg.homecompany.de/en/object/AG7096933>



## Description

The apartment "Peggy's Place" was artistically designed by Tita de Rêgo Silva after the structural completion in 2021. The apartment was furnished in honor of the famous Hamburg activist, author, and actress Peggy Parnass. The art installation includes many unique pieces, such as woodcuts, photos and drawings that are based on the eventful life of Peggy Parnass. The color of the apartment is similar to Peggy's last apartment in St. Georg - you will primarily find earth tones in combination with a spring-like lime green paired with a strong dark red. The furniture was all specially built for this apartment by a Hamburg carpenter. Everything is there that you need for your daily needs. Towels and bed linen are also provided.

Individual services, such as regular cleaning, can be booked from the adjacent Hotel Wedina. The adjacent hotel garden can also be used. Here you can sit, watch the squirrels, read a good book or eat something from the hotel bar. The apartment offers direct access to the garden. Laundry service possible for EUR7.50 per washing machine. An underground parking space can be booked.

Online viewing of the flat (360 ° panorama photos):  
<https://tour.feelestate.com/view/fullscreen/id/VVML0>

Energy pass information acc. to § 16a EnEV 2014:

Type of energy pass: Energy demand certificate

Final demand value: 89,5 kWh/(m²\*a)

Main source of heating energy heating: natural gas

Year of construction: 1850, renovated 2021

Energy efficiency class: C