

Chic new apartment in a quiet location near the Schanzenviertel

short-term rental apartment	Rent incl. add. costs 2.070,00 EUR per Month	Living space ca. 56,00 qm	Number of rooms 2,0	Available from 01.12.2024
--------------------------------	---	------------------------------	------------------------	------------------------------

Other dates

District	Altona
Deposit	4.140,00 EUR
Floor	6.Floor
Available until	Open-ended
Minimum rental length	120 days
Maximum number of tenants	2
Smoking / Nonsmoker	Non-smokers only
Balcony	yes
Elevator	Yes
Garden	No

Facilities

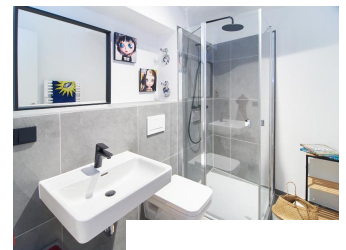
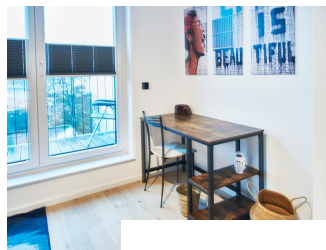
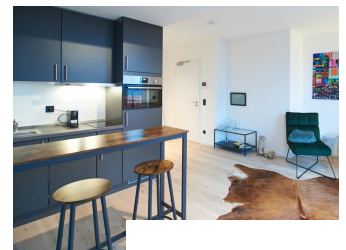
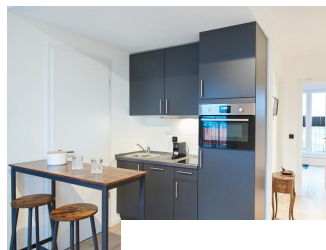
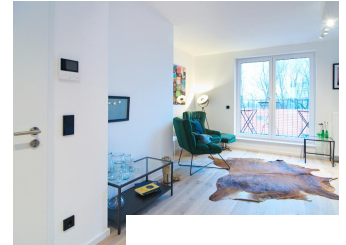
- | | |
|---------------------|------------------------|
| - balcony | - built-in kitchen |
| - parquett flooring | - washingmachine |
| - dishwasher | - bed-linnen |
| - towels | - satellite-TV |
| - Internet | - bathroom with shower |
| - Energieausweis | |

References

Please read our Notes on currency conversion
under <http://www.homecompany.de/en/currency-info>

Website synopsis

<http://hamburg.homecompany.de/en/object/AG7097248>



Description

Flat furnished end of 2022 in a new building built in 2022. The high-quality equipment includes a video intercom system. The flat is located in a quiet area north of the Schanzenviertel. Two roof terraces offer plenty of space to relax with either morning or evening sun. A roof terrace faces south-west, the other faces east. Real wood parquet is laid in the apartment. Floor-to-ceiling windows provide plenty of light. The spacious living room is equipped with an open kitchen. The bathroom with shower is very modern and tastefully designed with large-format gray tiles and fitted with black fittings. A special highlight is the wide view that is offered from the apartment. You can see as far as the Elbphilharmonie.

Online viewing of the flat (360 ° panorama photos):
<https://tour.feelstate.com/view/fullscreen/id/VVP68>

Energy pass information acc. to § 16a EnEV 2014:

Type of energy pass: Energy demand certificate

Final demand value: 56 kWh/(m²*a)

Main source of heating energy heating: KWK, fossil; electricity mix

Year of construction: 2019

Energy efficiency class: B

Print out 08.05.2024