

That's how life can be - Very modern furnished apartment with balcony and underground car park in Altona

| | | | | |
|-----------------------------|---|------------------------------|------------------------|------------------------------|
| short-term rental apartment | Rent incl. add. costs 1.750,00 EUR per Month | Living space ca. 62,00 qm | Number of rooms 2,0 | Available from 01.07.2024 |
|-----------------------------|---|------------------------------|------------------------|------------------------------|

Other dates

| | |
|---------------------------|------------------|
| District | Altona |
| Deposit | 3.200,00 EUR |
| Floor | 4.Floor |
| Available until | Open-ended |
| Minimum rental length | 270 days |
| Maximum number of tenants | 2 |
| Smoking / Nonsmoker | Non-smokers only |
| Balcony | no |
| Elevator | Yes |
| Garden | No |

Facilities

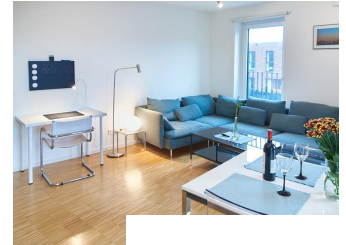
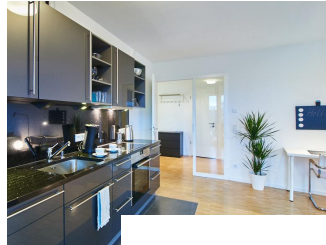
| | |
|---------------------|------------------------|
| - built-in kitchen | - kitchen |
| - parquett flooring | - washingmachine |
| - dishwasher | - bed-linnen |
| - towels | - cable-TV |
| - Internet | - video |
| - HIFI | - obstruct-fairly |
| - Energieausweis | - bathroom with shower |

References

Please read our Notes on currency conversion under <http://www.homecompany.de/en/currency-info>

Website synopsis

<http://hamburg.homecompany.de/en/object/AG7099295>



Description

Well-appointed flat with floor-to-ceiling windows and underfloor heating in a modern residential complex built in 2014. The living room is furnished with a comfortable sofa area, a dining table for up to four people, a 1.40 TV and a small work area. The open kitchen is kept in a modern anthracite tone. The bedroom has a 1.40 wide bed and plenty of closet space.

The bathroom with shower is equipped with bright tiles. A special highlight is the large balcony furnished with a garden lounge sofa, side table and chairs. An underground parking space (fits for SUV) is included.

Online viewing of the flat (360 ° panorama photos): <https://tour.feelestate.com/view/fullscreen/id/VVGBT>

Energy pass information acc. to § 16a EnEV 2014:

Type of energy pass: Energy demand certificate

Final demand value: 53,2 kWh/(m²*a)

Main source of heating energy heating: CHP, Combined heat and power, fossil

Year of construction: 2014

Energy efficiency class: B