

Newly furnished flat with terrace and underground car park - approx. 7 min by car to "Außenalster"

short-term rental apartment	Rent incl. add. costs 1.700,00 EUR per Month	Living space ca. 50,00 qm	Number of rooms 2,0	Available from 01.09.2024
-----------------------------	---	------------------------------	------------------------	------------------------------

Other dates

District	Wandsbek
Deposit	3.400,00 EUR
Floor	Bottom floor
Available until	Open-ended
Minimum rental length	180 days
Maximum number of tenants	2
Smoking / Nonsmoker	Non-smokers only
Balcony	no
Elevator	Yes
Garden	No

Facilities

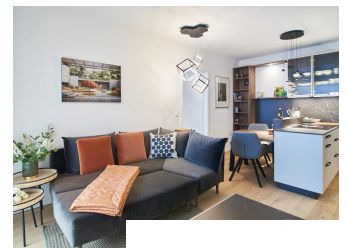
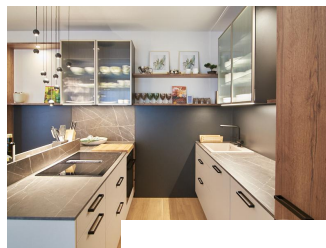
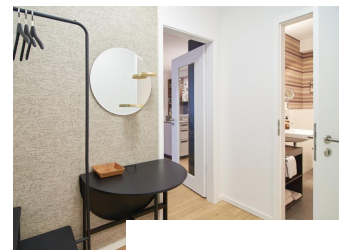
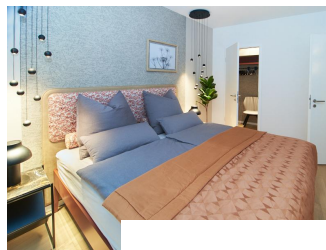
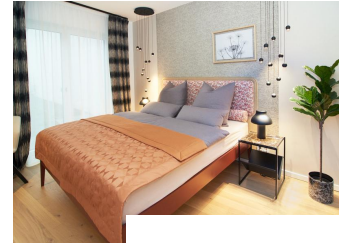
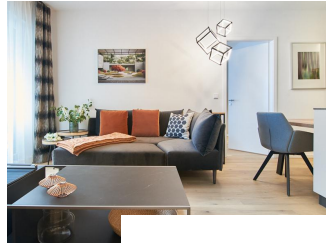
- | | |
|---------------------|------------------------|
| - living kitchen | - bathroom with shower |
| - parquett flooring | - tiles |
| - washingmachine | - dishwasher |
| - bed-linnen | - towels |
| - antenna-TV | - Internet |
| - Energieausweis | |

References

Please read our Notes on currency conversion under <http://www.homecompany.de/en/currency-info>

Website synopsis

<http://hamburg.homecompany.de/en/object/AG7100329>



Description

rental period: 6 calendar months

Well-designed 2-room flat with 50 square meters of living space plus a terrace. Very exclusive furnishing and equipment with branded kitchen appliances and carpentry fittings/furniture. It is a new building (year of construction 2022, furnishing 2023) with underfloor heating and real wood parquet floors. There is a washer dryer in the apartment. A separate dressing room is available. Smart TV via Magenta TV. Shops, cafes, etc. are in the immediate vicinity. The main train station is three subway stops away; the popular "Außenalster" can be reached on foot with a walk along the Eilbek Canal. Optionally, an underground parking space can be rented for EUR150 per month.

The net rent is EUR1588,79 plus 7% VAT (EUR111,21)

maximum rental: 6 calendar months

Online viewing of the flat (360 ° panorama photos):

<https://tour.feelstate.com/view/fullscreen/id/VVQYH>

Energy pass information acc. to § 16a EnEV 2014:

Type of energy pass: Energy demand certificate

Final demand value: 85,5 kWh/(m²*a)

Main source of heating energy heating: district heating

Year of construction: 2021

Energy efficiency class: C.

Print out 19.04.2024