

Furnished business flat with huge terrace

| | | | | |
|--------------------------------|---|------------------------------|------------------------|------------------------------|
| short-term rental apartment | Rent incl. add. costs 1.500,00 EUR per Month | Living space ca. 43,60 qm | Number of rooms 2,0 | Available from 01.03.2025 |
|--------------------------------|---|------------------------------|------------------------|------------------------------|

Other dates

| | |
|---------------------------|------------------|
| District | Eimsbüttel |
| Deposit | 3.000,00 EUR |
| Floor | 3.Floor |
| Available until | Open-ended |
| Minimum rental length | 180 days |
| Maximum number of tenants | 1 |
| Smoking / Nonsmoker | Non-smokers only |
| Balcony | yes |
| Elevator | Yes |
| Garden | No |

Facilities

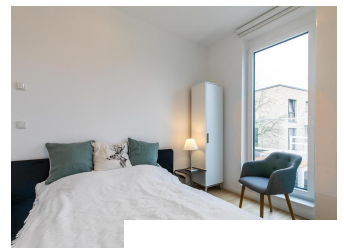
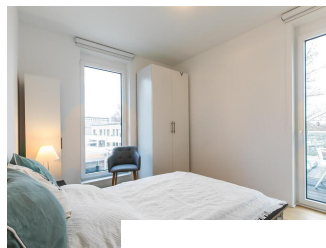
- | | |
|------------------------|---------------------|
| - balcony | - built-in kitchen |
| - bathroom with shower | - parquett flooring |
| - washingmachine | - dishwasher |
| - bed-linnen | - towels |
| - cable-TV | - Internet |
| - Energieausweis | |

References

Please read our Notes on currency conversion under <http://www.homecompany.de/en/currency-info>

Website synopsis

<http://hamburg.homecompany.de/en/object/AG7100452>



Description

Perfectly equipped new flat with a penthouse character, furnished in a subtle gray and white, with a large roof terrace and an additional balcony. The roof terrace is furnished with modern lounge furniture in white metal with wooden sides and gray cushions. There is also a box for storing the pads. The small balcony adjoining the bedroom has another seat, 2 chairs and a table. In the living room there is a comfortable sofa with a chaise longue, which can be used as a sofa bed for guests if required. The large TV is Smart TV capable. The very well-equipped kitchen can be reached via a sliding door. There is a dishwasher, refrigerator, washer-dryer combination, oven and microwave available. A folding dining table is integrated into the sliding door. The bedroom has a 1.40 m wide bed and a wardrobe. The U2 stop Hagenbecks Tierpark and a supermarket are within 3 minutes walking distance.

Online viewing of the flat (360 ° panorama photos): <https://tour.feelestate.com/view/fullscreen/id/VVQJD>

Energy pass information acc. to § 16a EnEV 2014:

Type of energy pass: Energy demand certificate

Final demand value: 59,2 kWh/(m²*a)

Main source of heating energy heating: Combined heat and power generation, fossil

Year of construction: 2018

Energy efficiency class: B