

Furnished flat with 2 bedrooms in Eimsbüttel

| | | | | |
|--------------------------------|---|------------------------------|------------------------|------------------------------|
| short-term rental apartment | Rent incl. add. costs 1.900,00 EUR per Month | Living space ca. 74,00 qm | Number of rooms 4,0 | Available from 01.12.2024 |
|--------------------------------|---|------------------------------|------------------------|------------------------------|

Other dates

| | |
|---------------------------|------------------|
| District | Eimsbüttel |
| Deposit | 3.800,00 EUR |
| Floor | 2.Floor |
| Available until | Open-ended |
| Minimum rental length | 240 days |
| Maximum number of tenants | 2 |
| Smoking / Nonsmoker | Non-smokers only |
| Balcony | yes |
| Elevator | No |
| Garden | No |

Facilities

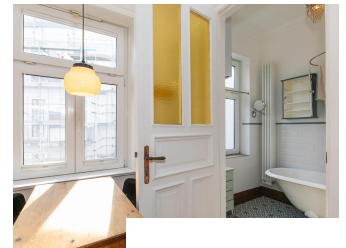
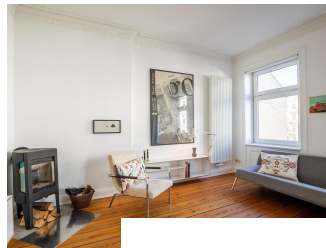
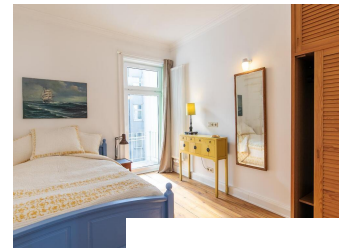
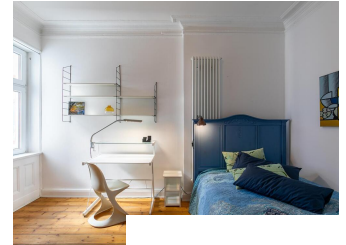
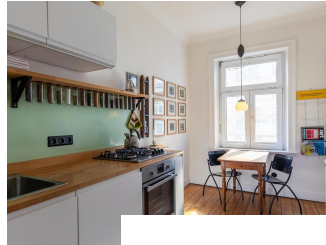
- | | |
|---------------------|-------------------------|
| - balcony | - built-in kitchen |
| - living kitchen | - bathroom with bathtub |
| - wooden flooring | - washingmachine |
| - dishwasher | - bed-linnen |
| - towels | - antenna-TV |
| - Internet | - Energieausweis |
| - separate bedrooms | |

References

Please read our Notes on currency conversion
under <http://www.homecompany.de/en/currency-info>

Website synopsis

<http://hamburg.homecompany.de/en/object/AG7100690>



Description

Bright, friendly old-style apartment in a quiet side street off Eppendorfer Weg. The apartment is centrally located, cafes and all shops, subway and the "Schanzenviertel", outdoor pool and hiking trail are in the immediate vicinity. The apartment has four rooms with stucco and wooden floors. Living and dining areas merge into one another. One of the two bedrooms is equipped with a 1.60 m wide bed and one with a 1.40 m wide bed. A modern eat-in kitchen is available. In addition to the bathroom with shower, there is a separate toilet. The apartment has two balconies. A separate storage room is available. A fireplace in the living room offers particular comfort.

Online viewing of the flat (360 ° panorama photos):
<https://tour.feelstate.com/view/fullscreen/id/VZR41>

Energy pass information acc. to § 16a EnEV 2014:

Type of energy pass: Energy demand certificate

Final demand value: 105,0 kWh/(m²*a)

Main source of heating energy heating: Electricity, natural gas, electricity-mix

Year of construction: 1889

Energy efficiency class: D

Print out 02.05.2024