

Fully furnished maisonette apartment on two levels in Rotherbaum

short-term rental apartment	Rent incl. add. costs 2.300,00 EUR per Month	Living space ca. 73,00 qm	Number of rooms 2,5	Available from 01.04.2025
--------------------------------	---	------------------------------	------------------------	------------------------------

Other dates

District	Eimsbüttel
Deposit	4.600,00 EUR
Floor	3.Floor
Available until	Open-ended
Minimum rental length	180 days
Maximum number of tenants	2
Smoking / Nonsmoker	Non-smokers only
Balcony	yes
Elevator	Yes
Garden	No

Facilities

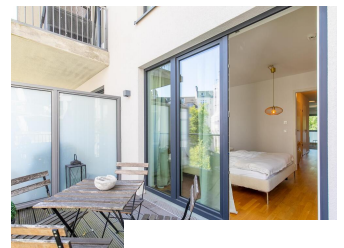
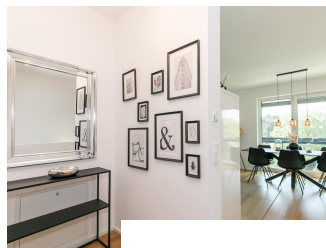
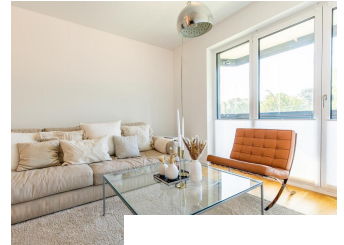
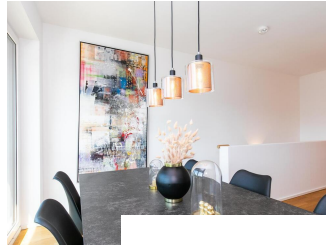
- | | |
|------------------------|---------------------|
| - balcony | - built-in kitchen |
| - bathroom with shower | - parquett flooring |
| - washingmachine | - dishwasher |
| - bed-linnen | - towels |
| - Internet | - Energieausweis |

References

Please read our Notes on currency conversion
under <http://www.homecompany.de/en/currency-info>

Website synopsis

<http://hamburg.homecompany.de/en/object/AG7101708>



Description

The modern duplex flat is located in the centrally located Rotherbaum/Grindel district. On the upper level is the spacious living and dining area with an open kitchen. Large floor-to-ceiling windows ensure plenty of daylight in the apartment and a wide view over Hamburg, in the evening you can see the illuminated television tower. An open staircase leads to the lower level of the flat. The bedroom is furnished with a 1.80 m wide double bed. The furnishings are modern and kept in subtle, harmonious colors. The high-quality furnishing with a few designer pieces conveys an exclusive, homely overall impression. The flat is equipped with underfloor heating. Two balconies offer plenty of space to relax after work and on weekends. The high-quality technical equipment completes the picture. A Bose Bluetooth music box is available. The flat screen TV can be used via Google Chromecast for various services such as Netflix etc. with their own accounts. Some channels can also be received without your own access. The Internet is set up via fiber optics with 1000 MBit. A Miele dryer is available.

Online viewing of the flat (360 ° panorama photos):

<https://tour.feelstate.com/view/fullscreen/id/VZV37>

Energy pass information acc. to § 16a EnEV 2014:

Type of energy pass: Energy demand certificate

Final demand value: 41,9 kWh/(m²*a)

Main source of heating energy heating: Combined heat and power generation, fossil, electricity mix

Year of construction: 2017

Energy efficiency class: A