

Furnished apartment for expats and companies in Hamburg north (Bramfeld)

| | | | | |
|--------------------------------|---|------------------------------|------------------------|------------------------------|
| short-term rental apartment | Rent incl. add. costs 1.050,00 EUR per Month | Living space ca. 25,00 qm | Number of rooms 1,0 | Available from 01.09.2024 |
|--------------------------------|---|------------------------------|------------------------|------------------------------|

Other dates

| | |
|---------------------------|------------------|
| District | Wandsbek |
| Deposit | 2.100,00 EUR |
| Floor | 3.Floor |
| Available until | Open-ended |
| Minimum rental length | 365 days |
| Maximum number of tenants | 1 |
| Smoking / Nonsmoker | Non-smokers only |
| Balcony | no |
| Elevator | Yes |
| Garden | No |

Facilities

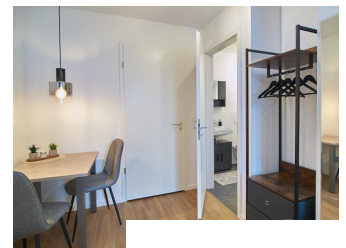
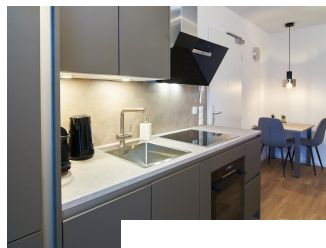
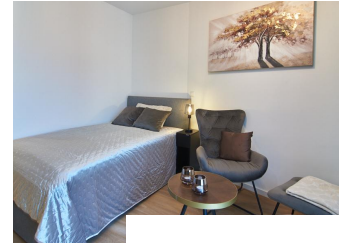
- | | |
|--------------------|------------------------|
| - built-in kitchen | - bathroom with shower |
| - washingmachine | - dishwasher |
| - bed-linnen | - towels |
| - Internet | - Energieausweis |

References

Please read our Notes on currency conversion
under <http://www.homecompany.de/en/currency-info>

Website synopsis

<http://hamburg.homecompany.de/en/object/AG7102342>



Description

The apartment, newly furnished and very well equipped in 09/2023, is located in a new building. Floor-to-ceiling windows, underfloor heating and a beautiful vinyl design floor create a comfortable living environment. The apartment is equipped with a high-quality open fitted kitchen in a pleasant color tone and branded appliances and a Caressi sink. In the living room there is a 1.20 wide bed, a comfortable sofa area with smart TV and a dining table. The cloakroom is in the entrance area. The washing machine is available in a separate storage room. There is also plenty of space on the shelves there. The very comfortable bathroom has an XXL shower and high-quality fittings. A variety of shopping opportunities for everyday needs, restaurants and small shops are in the immediate vicinity. The nearby Bramfelder See invites you to take relaxing walks after work.

Online viewing of the flat (360 ° panorama photos):
<https://tour.feelstate.com/view/fullscreen/id/VZ8V5>

Energy pass information acc. to § 16a EnEV 2014:

Type of energy pass: Energy demand certificate

Final demand value: 18,8 kWh/(m²*a)

Main source of heating energy heating: electricity mix, natural gas E

Year of construction: 2021

Energy efficiency class: A+

Print out 10.05.2024